



PENGERANG
INDEPENDENT TERMINALS

Pengerang Terminals

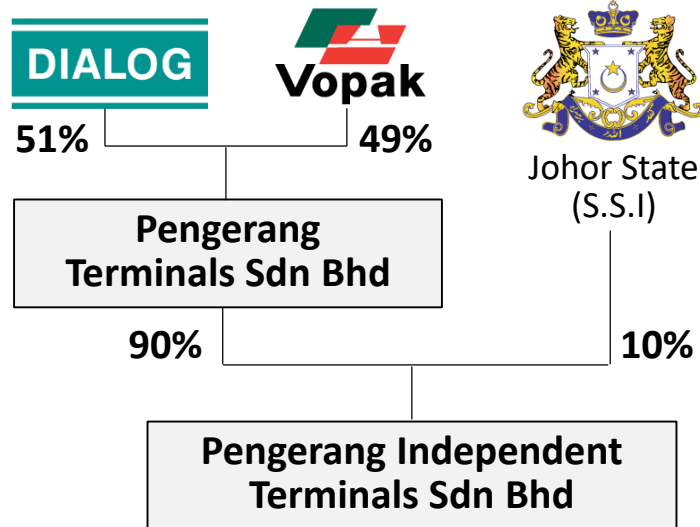
Pengerang – Rotterdam : Linked by Concept

8th January 2018



Shareholders & Profile

PITSB : 1 of 3 JV between Dialog & Vopak



Dialog Group Berhad

An integrated specialist technical services provider in the oil, gas and petrochemical industry providing services to the upstream and downstream sectors.

Vopak

World's leading independent provider of conditioned storage facilities for bulk liquids and gasses.

Johor State Incorporated (SSI)

Investment arm of Johor State Government, in which Pengerang site is located.

150 acres
Land Area

RM2 bil
Value

1.3 mil m³
Storage Capacity

6
Berths

SERVICES

Storage	Mixing	Distribution
Crude Oil & Petroleum Products		

Background

- In 2007, Dialog Group identified **Pengerang** as a suitable location to develop a **deepwater petroleum terminal** for oil storage and trading.
- In June 2009, Dialog Group signed an **MOU** with the **State Government of Johor** and the **State Secretary, Johor Inc (“SSI”)** to develop the project. Subsequently, **Vopak** joined Dialog and SSI in this venture.
- The MOU granted the Group the **right to reclaim the land** between the coastal line of Tanjung Ayam and Tanjung Kapal with the view to **build, own, maintain and operate a deepwater petroleum terminal** including tankage and marine facilities.



The Vision in Mind – Pengerang Deepwater Terminals Rotterdam of The East

Rotterdam Port

The Largest Refining and Petrochemical Port in the World



Regional
**Energy
Port**
with 24 m
Water Depth

Major International
**Commercial
Centre**

Important
**Transit
Point**

Gateway
To the region

Potentially Serving
3 Billion
Population Base
To the region

Pengerang Deepwater Petroleum & LNG Terminals

STRONG DEMAND

More than 60% of global petroleum product growth will come from this region.

Rotterdam Port

- Independent storage capacity 30 mil m³
- To cater for 400 mil population base

Europe

Location of Pengerang – One of the Busiest Global Shipping Lanes



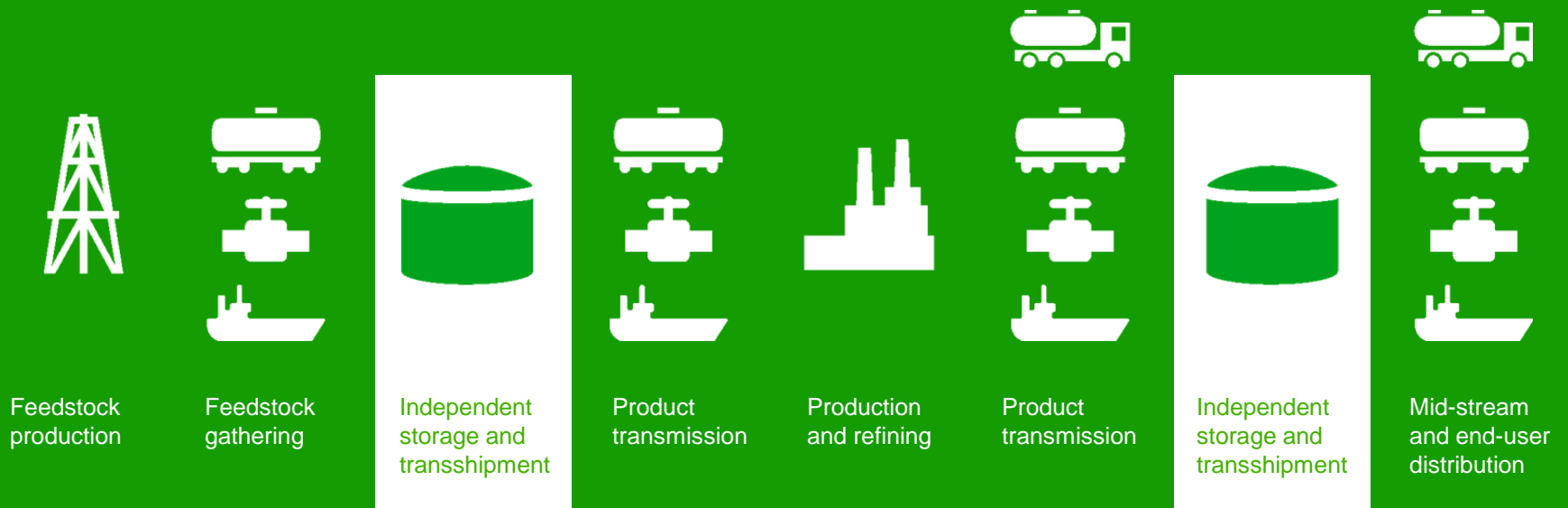
Singapore/Malaysia

- Commercial storage capacity 14 mil m³
- To cater for 3 bil population base

India
Sri Lanka
Thailand
Myanmar
Taiwan
Hong Kong
Vietnam
Brunei
MALAYSIA
Indonesia
Australia

Source: IEEJ: Supply and Demand Analysis on Petroleum Products and Crude Oils for Asia and the World

Integral part of customer's value chain



Strategic terminal portfolio criteria

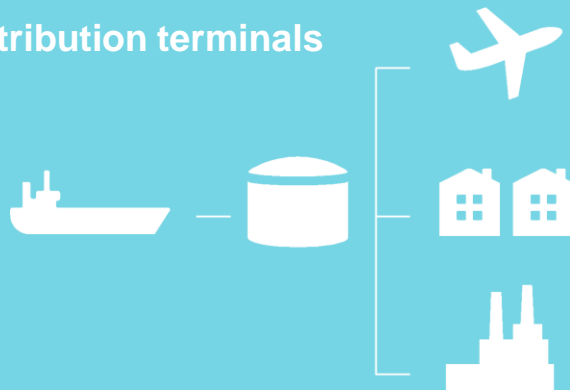
Industrial terminals



Gas terminals



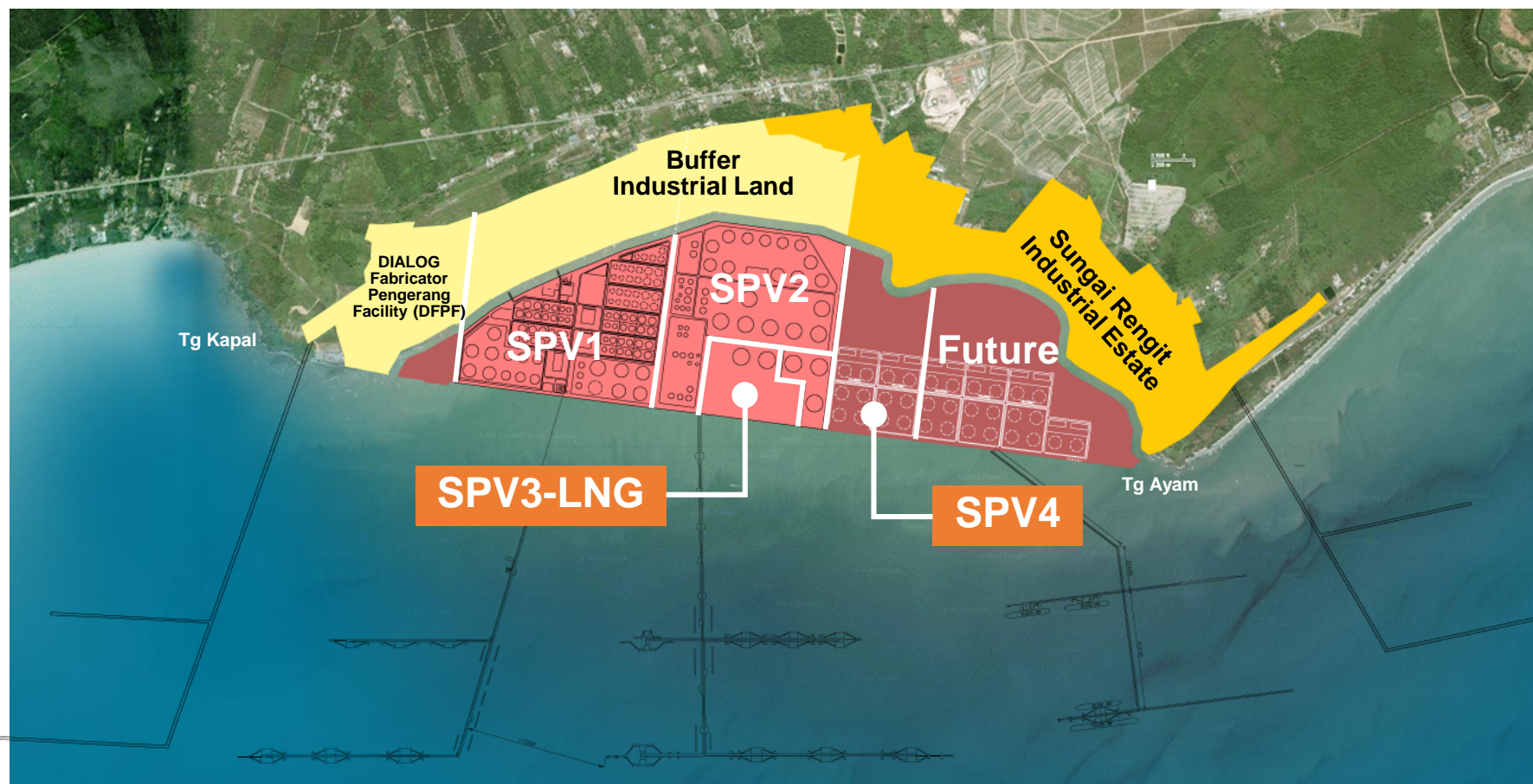
Distribution terminals



Hub terminals



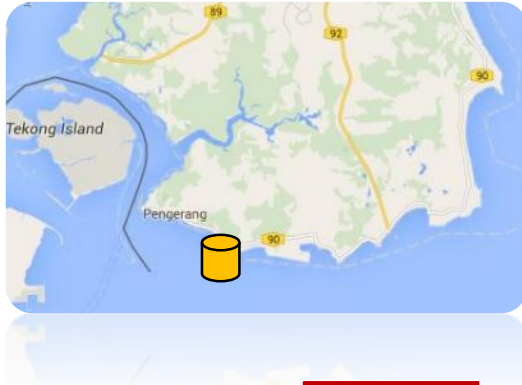
Pengerang Deepwater Petroleum & LNG Terminals



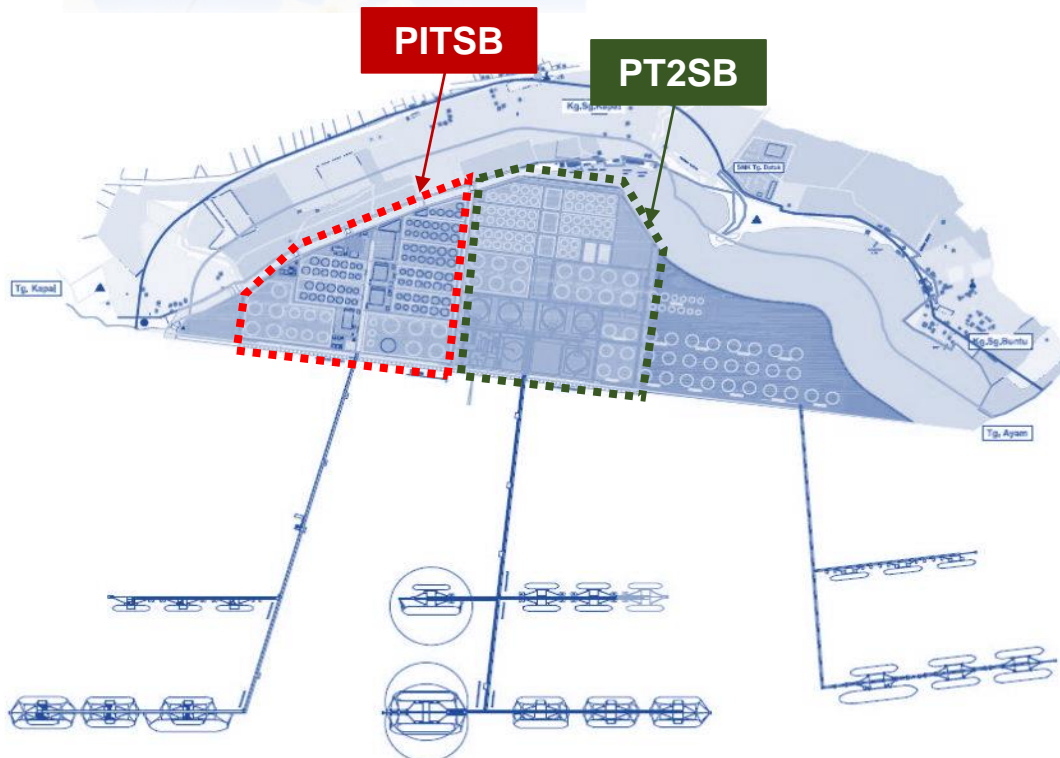
500 acres To be reclaimed from sea + **500 acres** Buffer Land
Between **Tanjung Ayam** and **Tanjung Kapal**

Vision PITSB

To Be The Safest Terminal With Exceptional Services Excellence



- South-eastern tip of Johor
- Strategically located along East-West International Trade Lanes
- Close proximity to major trading hub to Singapore
- Natural deep water draft up to 24 meters able to accommodate VLCCs
- Natural sheltered harbor from monsoon seasons



1,284,000

Existing Storage Capacity (cbm)

430,000 (Phase 1e)

Expansion Storage Capacity (cbm)

10,000 to 70,000

Tank Sizes (cbm)

Storage, Blending, Distribution

Services (for both CPP and Crude)

Timeline



Reclamation of 500 acres of seabed land



Construction of tank terminal in three phases:
1A (432,000 cubic meters)
1B (432,000 cubic meters)
1C (420,000 cubic meters)



Arrival of first commercial petroleum vessel



Arrival of 100th vessel



Inclusion into Platts assessment process

2010 - 2013

2014

2015



Construction of 'L'-shaped jetty



Successful commissioning and start-up of phases 1A and 1B



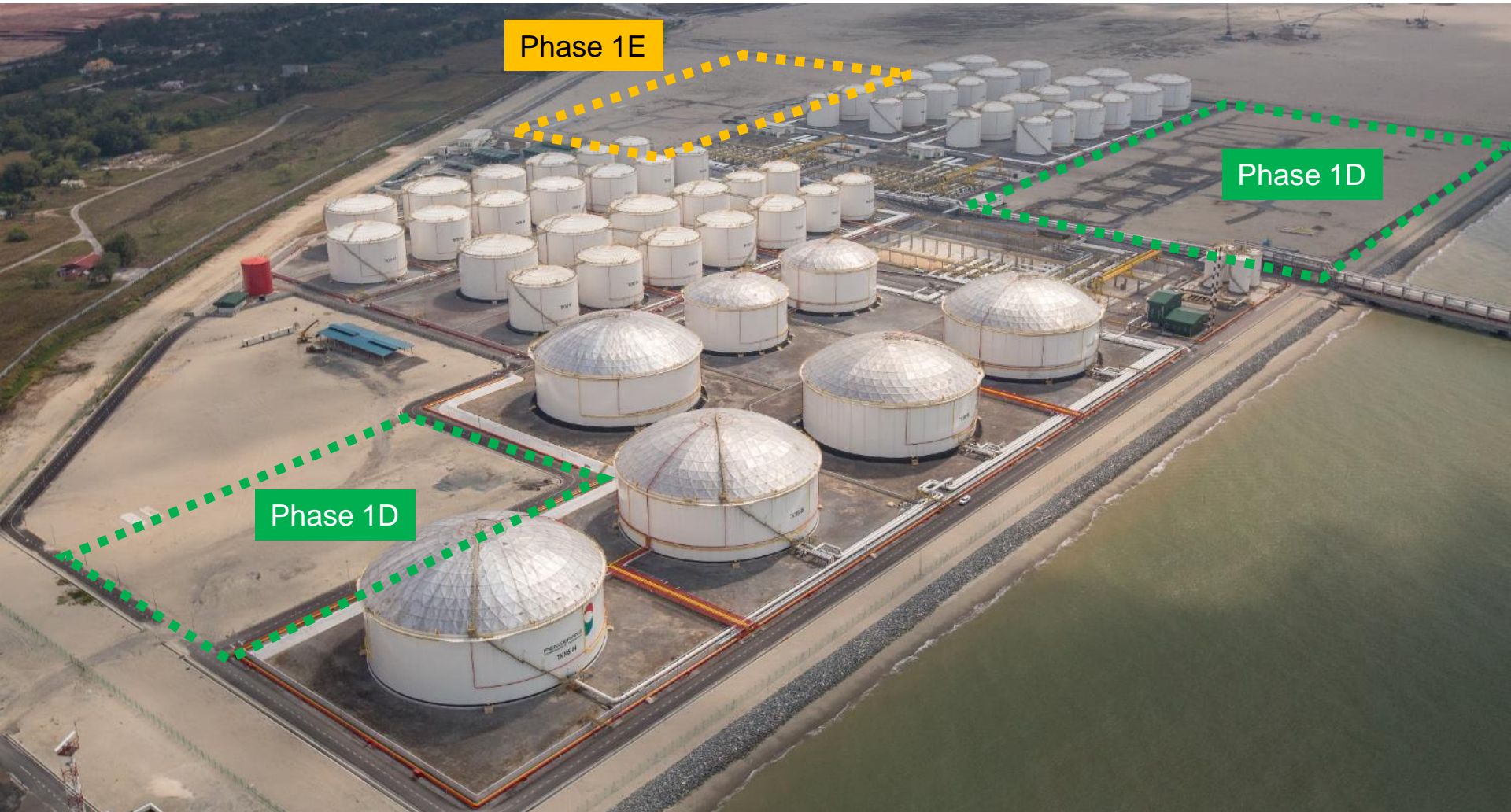
Official opening by Malaysia's Prime Minister, YAB Dato' Sri Mohd Najib bin Tun Haji Abdul Razak



Arrival of first Very Large Crude Carrier (VLCC)



Tank Infrastructure



Future plan – Phase 1D Crude (target 360 kcbm) and Phase 1E CPP (430 kcbm)

Jetty Infrastructure



*5 operating berths in use (B601, B603, B604, B605 and B606)
Berth B602 planned for Phase 1E expansion, targeted for Q4 2018 to be operational*

Pengerang Terminal Two Sdn Bhd (PT2SB)

Logistics will be handled through PT2SB for all liquids



PRPCUF
(Petronas)

40%

DIALOG

25%



25%



Johor State
(S.S.I)

10%

1.5 mil cbm
Storage Capacity

157 acres
Land Area

12 berths

RM 6.0 bil
Value

PT2SB

Dedicated Industrial Terminal for Refinery and Petrochemical Integrated Development (“RAPID”) Complex

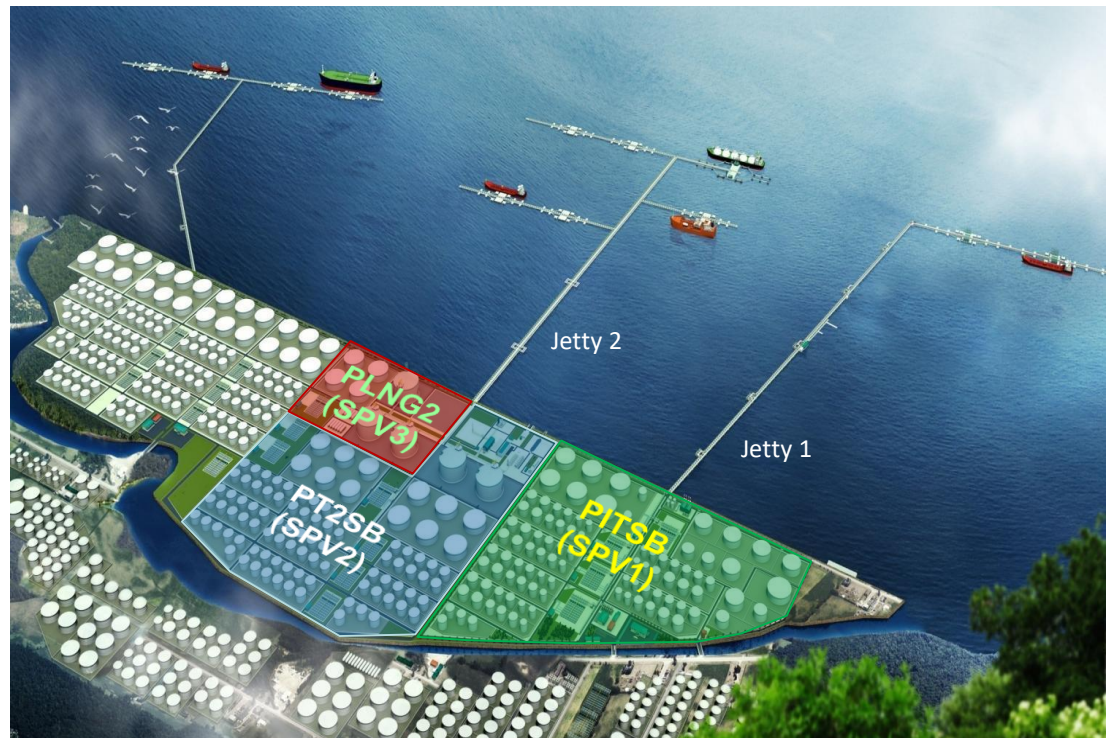
SERVICES

Handling	Storage	Distribution
----------	---------	--------------

Crude Oil, Petroleum, Chemical & Petrochemical Feedstock, Products and By-Products		
--	--	--

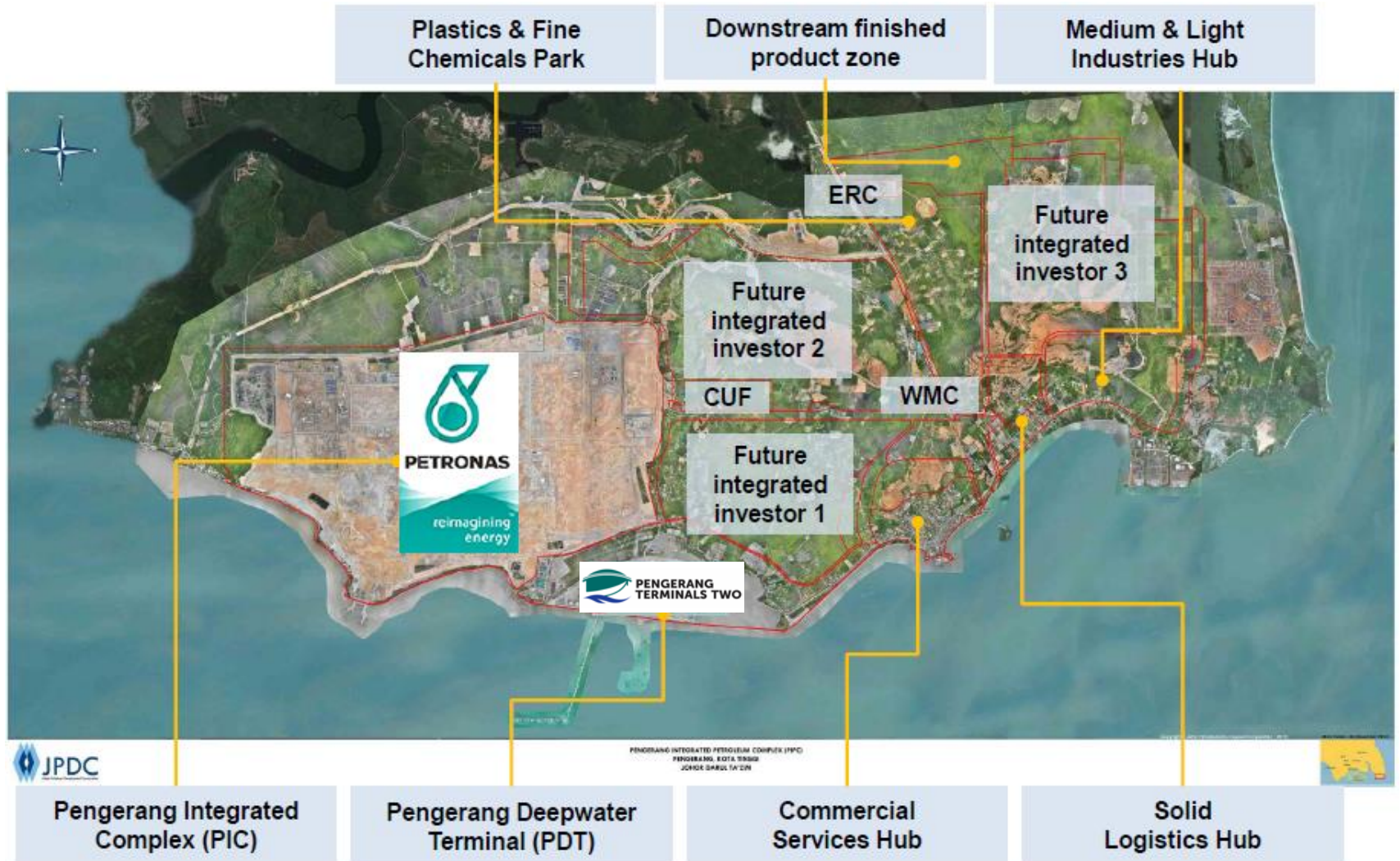
Target Completion & Commissioning

BY Q1 2019



Pengerang Integrated Petroleum Complex (PIPC)

PIPC Masterplan



PMOSB

Pengerang Marine Operations Sdn Bhd



PMOSB is wholly owned by Dailog Group Berhad

- Manage, monitor and co-ordinate of vessel movements within marine area
- Provide VTMS Services
- Coordinate maintenance dredging
- Coordinate berthing/ unberthing of vessels
- Implement marine SOP/ERP



SPVs (e.g. PITSB)

Terminal Operator License for PDT



Pengerang Marine Operations

Johor Port Authority



Authority/ Regulator

Navigation Aids



Marine Department

Pilotage and Towage services



Johor Port Berhad

Security



Marine Police



Royal Malaysian Navy



Malaysia Maritime Enforcement Agency

Thank You

