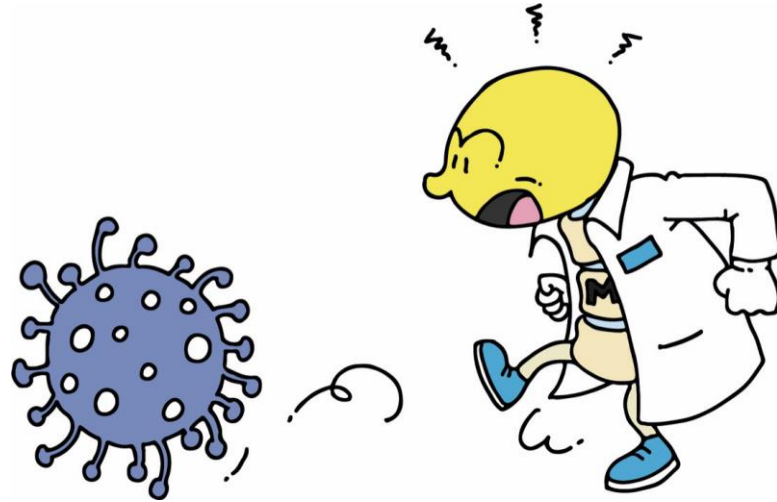


MARKANT

Ecovid sytem
Covid compliant office

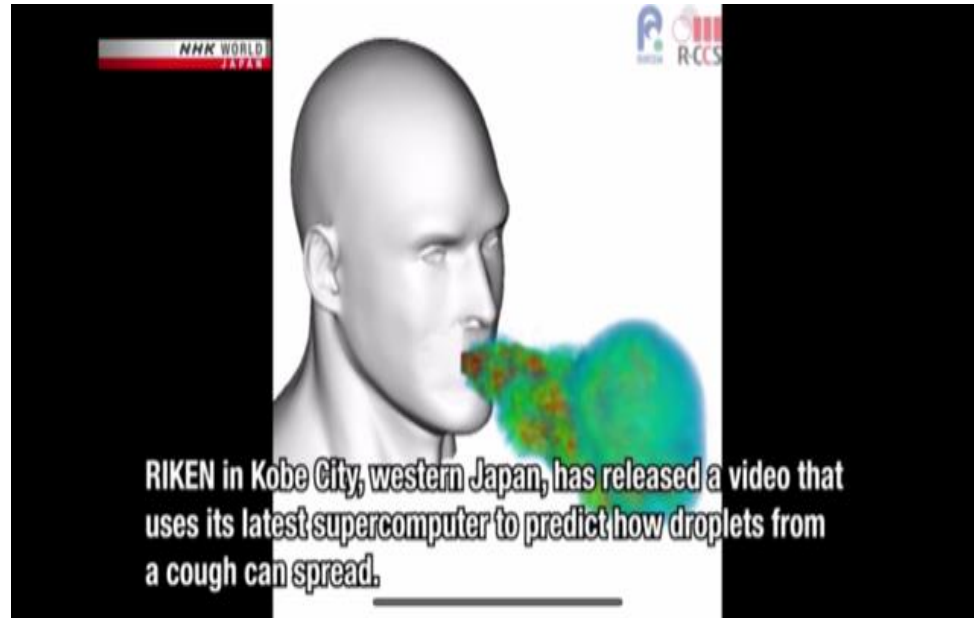


Markant's mission for the office interior in next 18 months

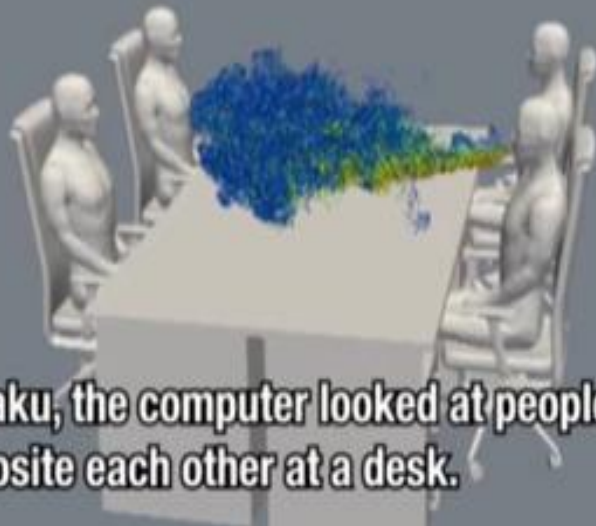


The workplace in the post pandemic

What is going to stay long term after this Pandemic?



Video: RIKEN, Toyohashi University of Technology
in cooperation with Kyoto Institute of Technology,
Osaka University



Called Fugaku, the computer looked at people without masks
sitting opposite each other at a desk.

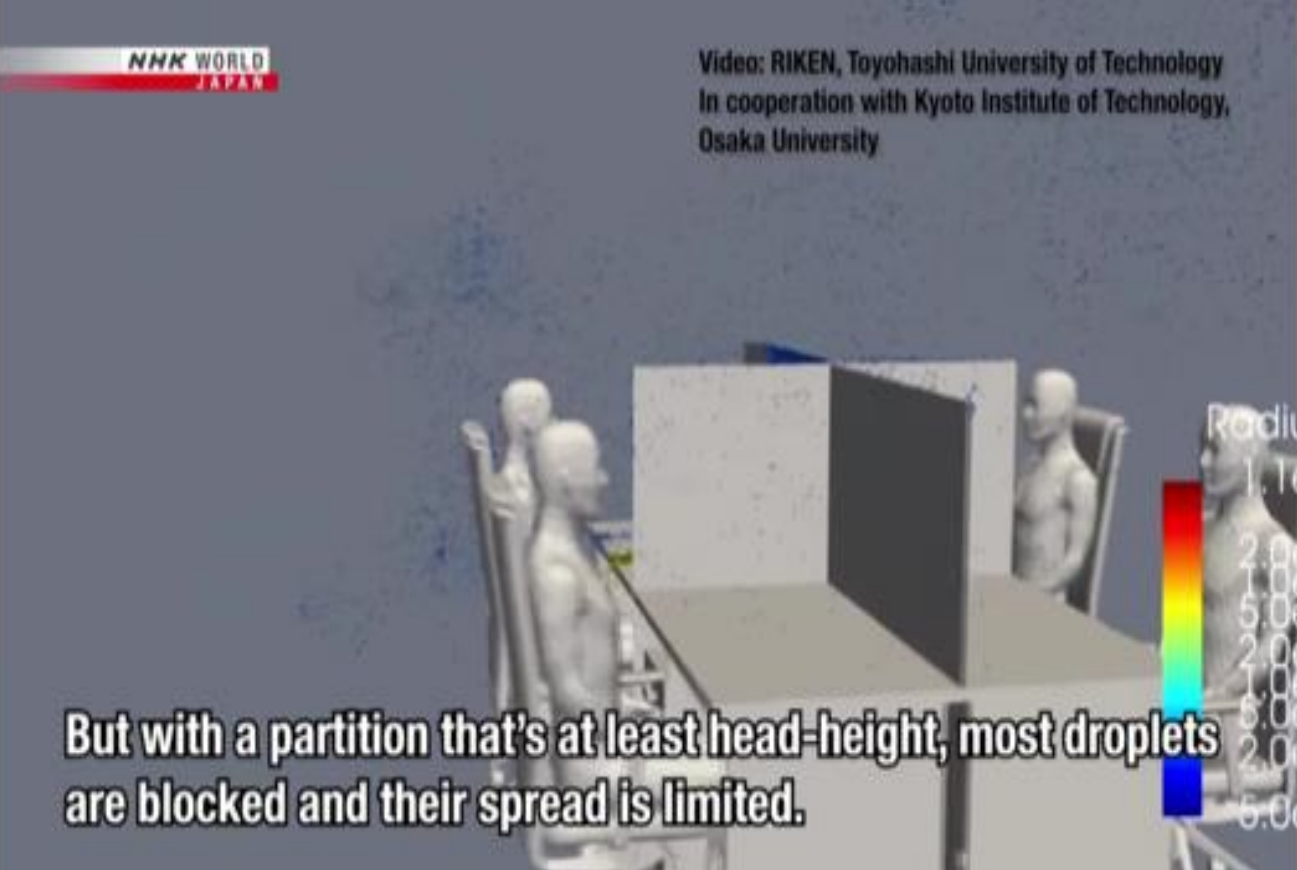
NHK WORLD

Video: RIKEN, Toyohashi University of Technology
in cooperation with Kyoto Institute of Technology,
Osaka University

With no partition in between, cough droplets spread directly
to the person opposite, then right around the room.

Radius
1.1e-03
5.0e-4
2.0e-4
1.0e-4
5.0e-5
2.0e-5
1.0e-5
5.0e-6
1.0e-6
5.0e-7





But with a partition that's at least head-height, most droplets are blocked and their spread is limited.

The image shows a 3D simulation of a meeting room. Three human figures are seated around a table. A partition is placed between them, reaching up to their head level. A color-coded visualization of droplet spread is shown, with a vertical color bar on the right indicating droplet radius. The color bar ranges from blue (small radius) to red (large radius). The droplet spread is concentrated in the area between the figures and the partition, with very little spread occurring behind the partition. The text at the bottom explains that a head-height partition blocks most droplets, limiting their spread.



Make your office safe and productive

Restore your office during the pandemic almost to full capacity!

Markant offers an affordable solution that is not only safe and extremely durable, but may restore your office during the pandemic to almost full capacity again*. People in the office will be safe and feel safe, provided your office has good air ventilation. Covid-19 is then no longer a reason not to go to the office. Working from home is then a privilege again, not an obligation.

*Depending on local regulations and internal transportation capacity.

The crisis around Covid-19 has taught us how vulnerable we are and how quickly a virus may spread. Underneath some how to's returning back to the office during pandemic:

- design the workplace in a safe way?
- increase the capacity of the office?
- manage the change?
- deal with all the anti-Covid-materials after the crisis?

Waste of materials

Later on, in the post pandemic, the environment should not be polluted with all kinds of temporary Covid-19 office solutions. Markant focused on the right balance between safe, temporary and after-life.

When there will be a vaccine available and Covid-19 office solutions no longer will be needed, Ecovid Screens will be easy to remove and fully separated to mono-materials. Ideal for recycling. That is why rivets are used instead of glue and the amount of materials reduced as much as possible.



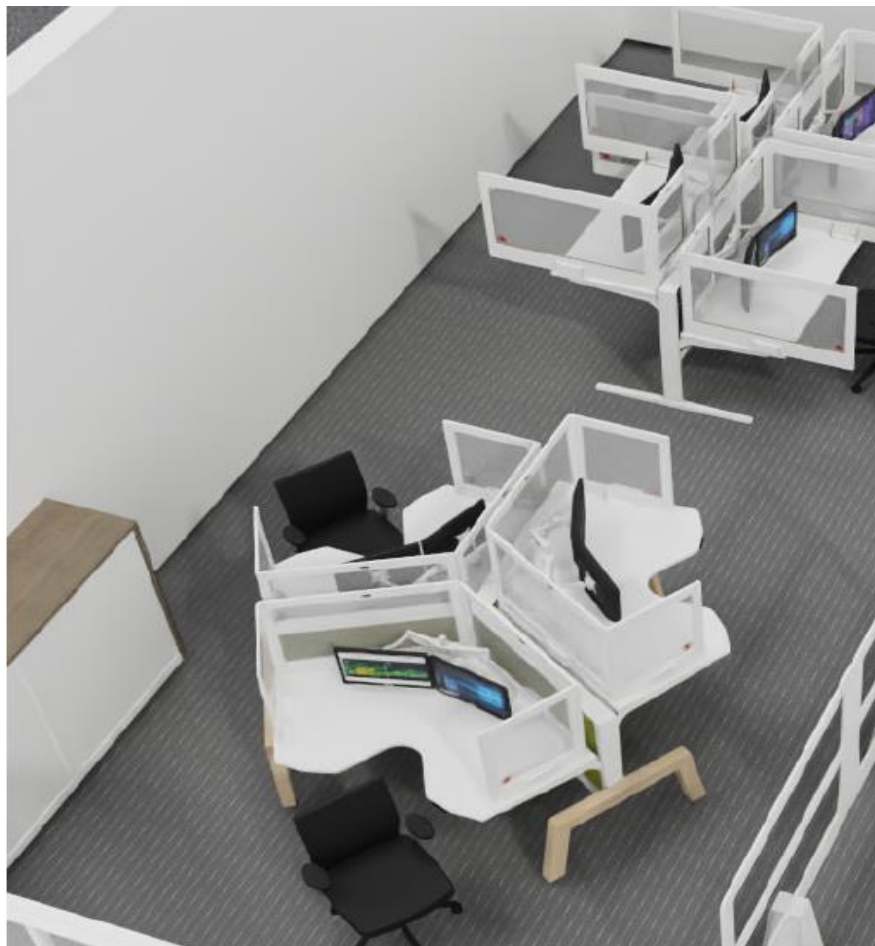


Ecovid Workstation series

Ecovid desk screens are 80cm high and it's three-sided screens solutions protect office workers properly in both standing and sitting positions.

To work healthy and productively, the office must be a safe place. The Ecovid Workstations series provides a safe haven in an office.

Strong cross-corrugated cardboard is used as a frame for transparent PET screens. This is a sturdy and good looking solution. The feet are flat packed and easy to assemble and can be fixed to the desktop with the included Tesa 57550 removable powerstrips (60x30mm). The strips are removable after use. Beware that most other tapes used for these applications are just packaging tape that are difficult and really costly to remove.





One item fits all rectangular desks

The telescopic sliding screen makes one single Ecovid desk screen unit fit all desks from 120 cm until 180 cm wide. Always on stock at your dealer and always fits your desk. It works great together with most monitor arms.

For Wing desks there is the Wing Ecovid desk screen. The screens are linked together in the corners with Cartonclips to limit throughput. There is also a safe cable entry in the centre screen.

Safe

Especially in the Corona era, working healthy is important. With a height of 80 cm, the Ecovid screens protect all employees in both sitting and standing positions. Especially in the Corona era, working healthy is important.

Work sitting and standing

Ecovid screens protect all employees in both sitting and standing positions

With an 80 cm deep desk, the screen will protrude 40 cm backwards to protect you and your neighbours sideways. After researching different depths, Markant concluded that the balance between safety and convenience is optimal with these dimensions.



Sliding adjustable single item solution from 120 til 180 cm wide



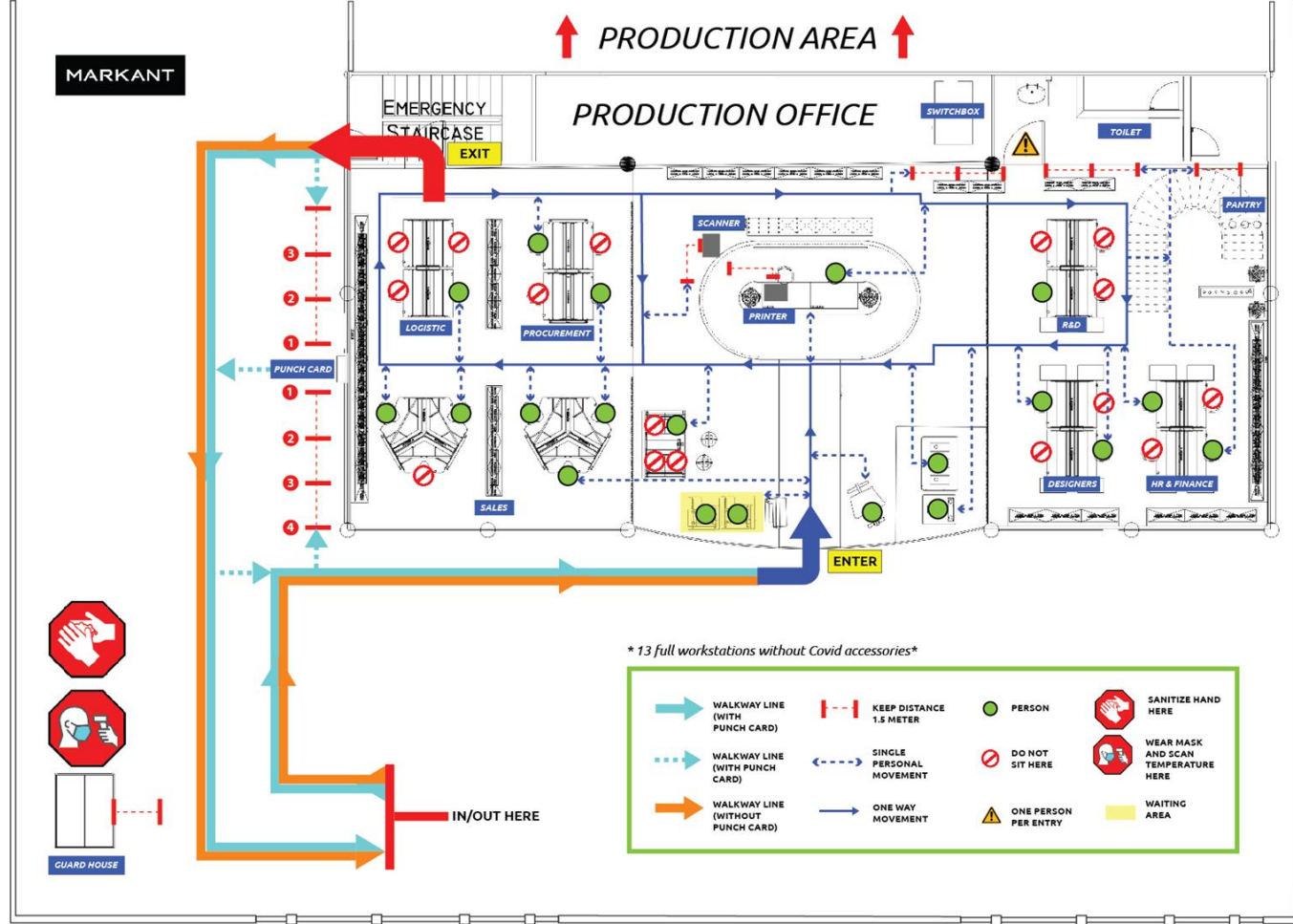
Fits behind most monitor arms

What can Markant help in this?

CovidCompliantOffice.com

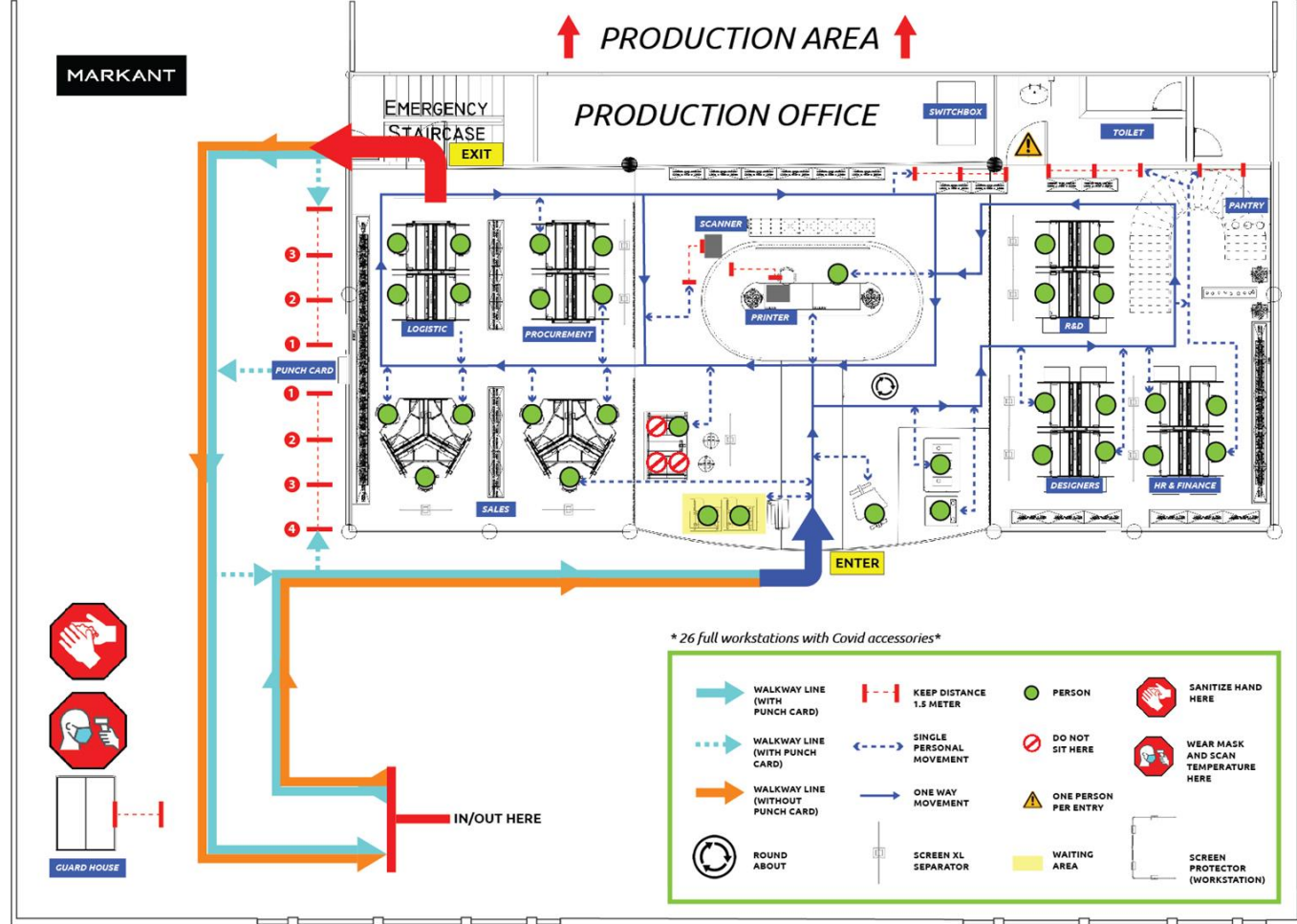
*13 full workstations

Without Covid accessories



*26 full workstations

With Covid accessories



Collaboration Space

Parc De La Distance

spaces that can enable collaboration and social interaction safely will be fundamental to re-establishing workplace culture and teamwork







MARKANT

Health & Productivity

Reference link

<https://www.smh.com.au/business/workplace/what-will-tomorrow-s-workplace-bring-more-elbow-room-for-starters-20200408-p54i85.html>

<https://www.linkedin.com/pulse/start-workplace-we-should-want-scott-compton/>

<https://www.1843magazine.com/features/death-of-the-office>

https://www.nejm.org/doi/full/10.1056/NEJMc2004973?utm_medium=website&utm_source=archdaily.com - aerosal & surface stability of sars-cov2

<https://www.archdaily.com/937801/studio-precht-imagines-a-park-for-physical-distancing-during-the-coronavirus-pandemic> - parc de la distance