



# *One Stop Centre for Business Travellers*

Welcoming Investors, Keeping You Safe

MDBC  
Sivasuriyamoorthy Sundara Raja  
3 March 2021

# Challenges Ahead



DEPARTMENT OF STATISTICS MALAYSIA  
MINISTRY OF ECONOMIC AFFAIRS



## Global FDI Inflow

UNCTAD estimated net FDI inflows contracted by 42% in 2020 compare to 2019.

FDI is projected to **decrease** by a further **5% to 10% in 2021**.

Recovery only in 2022



## Malaysia GDP

**Gross Domestic Product** performance for 2020 **declined 5.6%**.

This is influenced by the fall of all economic sectors due to MCO and the influence of external factors.

IMF has forecasted **7% growth** for **2021**

## Unemployment Rate

Unemployment rate remained at **4.8%** in **November 2020** which represents around **764,400 unemployed persons** in Malaysia



## Investment Projects

Getting **approved** projects **off the ground 2018-2019**  
241 Manufacturing Projects  
FDI: RM52.7 Billion  
**2020**  
436 Manufacturing Projects  
FDI: RM56.6 Billion

New Projects  
**Leads : RM89.4 Billion**  
**Pipeline: RM47.7 Billion**

# Structure of OSC



Evaluates and considers applications for Long Term Business Travellers and Short Term Business Travellers within three (3) working days

Facilitates the incoming Short Term Business Traveller's entry to Malaysia at the Kuala Lumpur International Airport (KLIA)

Containing information and advisory services to facilitate the entry of Business Travellers.  
URL: <http://safetravel.mida.gov.my/>

# OSC Committee has commenced effective 2<sup>nd</sup> October 2020

The OSC Committee meeting is held on a **daily basis** and managed by MIDA, with representatives from:



MINISTRY OF INTERNATIONAL TRADE AND INDUSTRY



Ministry of Health Malaysia



This Centre will assume a critical role in ensuring that Malaysia remains on track to economic recovery and growth, by enabling executive and essential personnel to travel to, and continue their work in, Malaysia.

**7,528**

## Long Term Business Travellers

Applications Evaluated via MYEntry System

(as at 2 March 2021)

**60**

## Short Term Business Travellers

Applications evaluated manually as the establishment of Business Travellers Centre at KLIA is in progress.

(as at 2 March 2021)

# Types of Business Travellers

## Long Term Stay

### MY ENTRY SYSTEM

- Frequent Foreign Business Travellers (Exit Return)
- New and Existing Expatriates (Stranded Abroad)
- Foreign Technical Experts (PVP)

### MY TRAVEL PASS SYSTEM

- Social Visit Pass Holders (15-90 days)
- Frequent Malaysian Business Travellers (Exit Return)
- Permanent Resident Pass Holders (PR)
- Malaysia My2nd Home Social Visit Pass Holders (MM2H)

## New Category

## Short Term Stay

### MY ENTRY SYSTEM

- Potential Investors
- Existing Investors (Chairman/Board members/etc)
- Technical Experts
- Business Customers

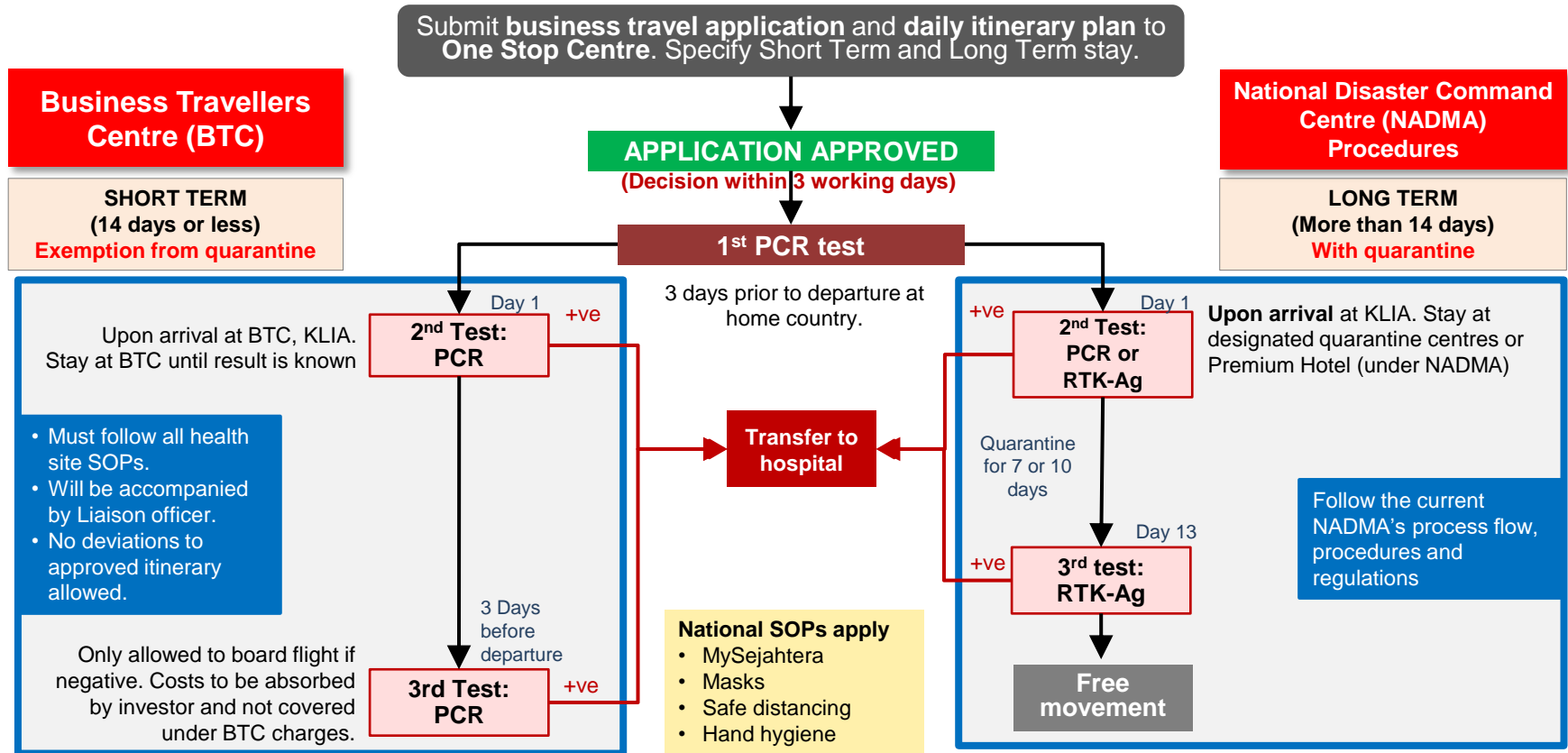
Phase 1

Implemented

Phase 2

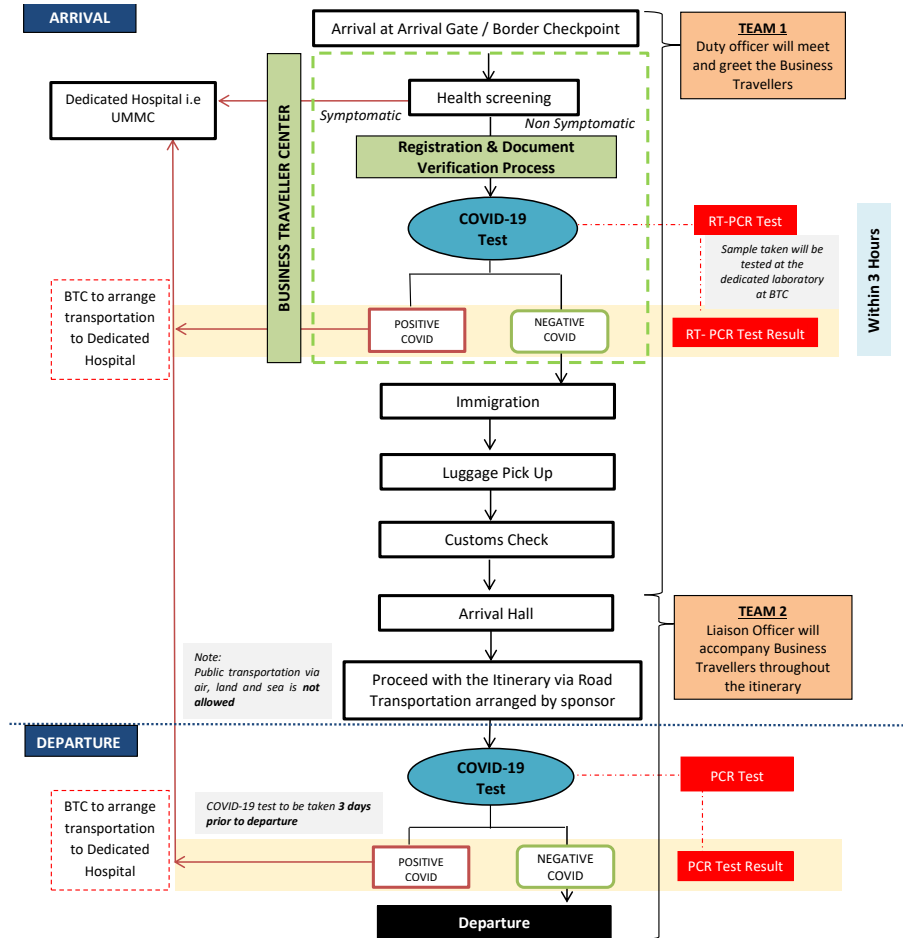
Ongoing

# Business Travellers Entry Mechanism

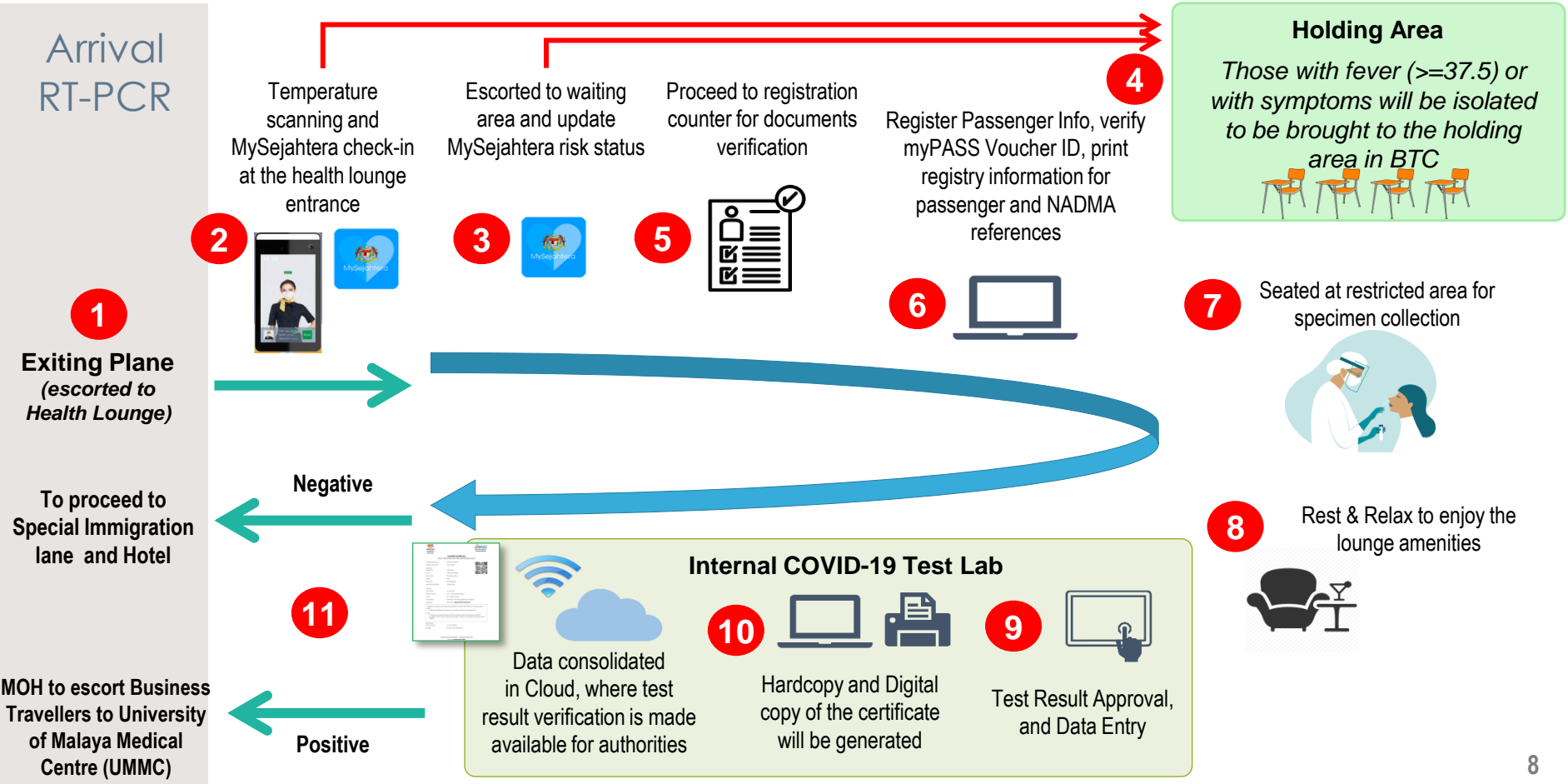


# Process Flow for Short Term Business Travellers at KLIA

**BTC**



# Process Flow of BTC





# Cost Involved for Short Term Business Travellers

## Services at Business Travelers Centre (BTC)

A.	Services	Charges
1.	Business Travellers Centre - Swab Test upon arrival - Usage of Business Lounge - Food & beverages	MYR 870 per person

## Summary Cost for Liaison Officer

B	Services	Charges	Remarks
1.	Daily Allowance	MYR 250 per pax per day	
2.	Flight charges	MYR 400 per One-way trip	Peninsular Malaysia (SM)
		MYR 900.00 per One-way trip	Sabah Sarawak (SS)
3.	Accommodation	MYR 300.00 per night	
4.	Meal allowance	MYR 50.00 per day	Only applicable for outside Selangor and Putrajaya

# Cost Simulation I

## Local Travelling – 1 Business Traveller

### OPTION 1

Klang Valley (4 days)	
Covid test and usage of BTC	RM870.00
LO (4 days package)	RM1,000.00
<b>Total</b>	<b>RM1,870.00</b>

### OPTION II

Klang Valley (14 days)	
Covid test and usage of BTC	RM870.00
LO (14 days)	RM3,500.00
<b>Total</b>	<b>RM4,370.00</b>

## Outstation – 1 Business Traveller

### OPTION I

Outside Klang Valley - Peninsular (4 days)	
Covid test and usage of BTC	RM870.00
LO(4 days)	RM1,000.00
Accommodation (3 nights)	RM900.00
LO Meal allowance	RM200.00
<b>Total</b>	<b>RM2,970.00</b>

### OPTION II

Outside Klang Valley - Sabah / Sarawak (4 days)	
Covid test and usage of BTC	RM870.00
LO(4 days)	RM1,000.00
Flight & Accommodation (3 nights)	RM2,700.00
LO Meal allowance	RM200.00
<b>Total</b>	<b>RM4,770.00</b>

Current cost per entry with mandatory 14-days Quarantine in Malaysia  
RM2,100 (Quarantine Centre) + RM2,600 (Administrative Fees) = RM4,700

# Cost Simulation II

## Local Travelling – 3 People

### OPTION 1

Klang Valley (4 days)	
Covid test and usage of BTC	RM2,610.00
LO (4 days)	RM1,000.00
<b>Total</b>	<b>RM3,610.00</b>

### OPTION II

Klang Valley (14 days)	
Covid test and usage of BTC	RM2,610.00
LO (14 days)	RM3,500.00
<b>Total</b>	<b>RM6,110.00</b>

## Outstation – 3 People

### OPTION 1

Outside Klang Valley – Peninsular (4 days)	
Covid test and usage of BTC	RM2,610.00
LO(4 days)	RM1,000.00
Accommodation (3 nights)	RM900.00
LO Meal allowance	RM200.00
<b>Total</b>	<b>RM4,710.00</b>

### OPTION II

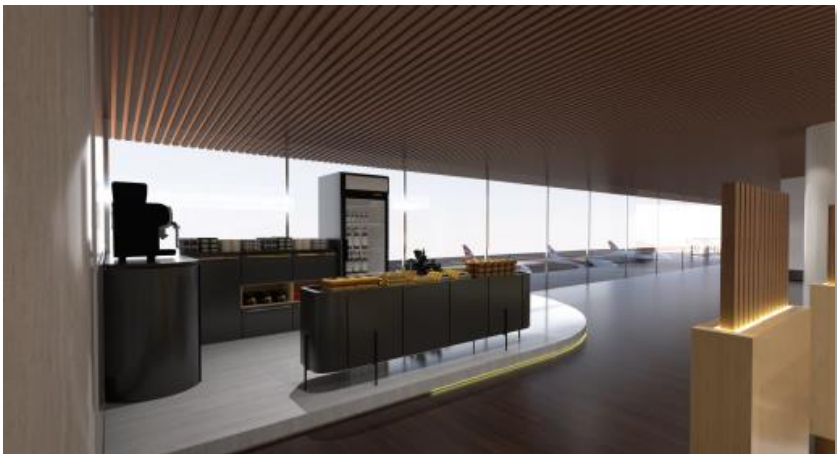
Outside Klang Valley - Sabah / Sarawak (4 days)	
Covid test and usage of BTC	RM2,610.00
LO(4 days)	RM1,000.00
Flight & Accommodation (3 nights)	RM2,700.00
LO Meal allowance	RM200.00
<b>Total</b>	<b>RM6,510.00</b>

Current cost per entry with mandatory 14-days Quarantine in Malaysia  
RM2,100 (Quarantine Centre) + RM2,600 (Administrative Fees) = RM4,700

# Artist Impression of BTC (Ground Floor)



# Artist Impression of BTC (Upper Floor)



# Artist Impression of BTC

(Aerial View - Ground Floor)



# Artist Impression of BTC

(Aerial View - Upper Floor)

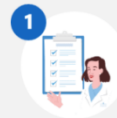




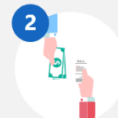
## Welcoming Investors, Keeping You Safe

Malaysia is gradually reopening its borders. Your business is important to us, and so is your health. Entry permissions for business travellers allow people who can contribute to Malaysia's economy to enter while prioritising public health and safety.

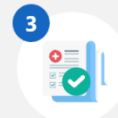
### Steps to Enter Malaysia as a Business Traveller



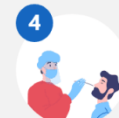
**1**  
Obtain Entry  
Permission  
Approval prior to  
arrival



**2**  
Make the necessary  
payments



**3**  
Registration upon  
arrival at  
MOH/NADMA  
Counter/Business  
Travellers Centre.  
Follow all health  
protocols and safety  
regulations.



**4**  
Undertake PCR  
COVID-19 Test



# How long will you be staying in Malaysia?

## Short Term Stay

Staying for 14 days or less

Learn more about the guidelines and process flow

[Learn More](#)

Apply for the Entry Permission Approval

For Potential Investors, Business Customers, Technical Experts and Existing Investors

[Apply Here](#)

## Long Term Stay

Staying for more than 14 days

Learn more about the guidelines and process flow

[Learn More](#)

Apply for the Entry Permission Approval

For EP/PVP/RP-T

[Apply Here](#)

For PR/MM2H/ Malaysia Exit-Return/ Social Visit Pass (15-90 days)

[Apply Here](#)

## Business Travellers Centre

The Business Travellers Centre is a dedicated point of entry to expedite business travellers with the relevant information and guidelines. This centre is located before the immigration Counter and can be found at the following entry point:

> Kuala Lumpur International Airport (KLIA)

[Find Out More](#)



## Important Announcement

### Important Announcement: Extension Of Conditional Movement Control Order (CMCO) By The Government Of Malaysia On 26 October 2020 – 9 November 2020

In reference to our announcement made on 22 October 2020, please be informed that all counter- services in Expatiate Services Division (ESD) at Putrajaya and MYXpats Centre at Mutiara Damansara...

[Read More](#)

### Latest Update: Conditional Movement Control Order (CMCO) By The Government Of Malaysia On 22 October 2020

MYXpats Centre remains committed to ensuring the safety of its employees and public stakeholders in light of the recent increase of COVID-19 cases in Selangor, Kuala Lumpur, and Putrajaya. we...

[Read More](#)

### Latest Updates: Conditional Movement Control Order (CMCO) By The Government Of Malaysia On 12 October 2020

This is with reference to the latest announcement of COVID-19 outbreak made by the Government of Malaysia on 12 October 2020.

[Read More](#)

[View All](#)

## In Collaboration with



MINISTRY OF  
INTERNATIONAL  
TRADE AND INDUSTRY



MINISTRY OF HEALTH  
MALAYSIA



MINISTRY OF FOREIGN  
AFFAIRS MALAYSIA



MINISTRY OF  
TRANSPORT MALAYSIA



MALAYSIAN INVESTMENT  
DEVELOPMENT  
AUTHORITY



IMMIGRATION  
DEPARTMENT OF  
MALAYSIA



NATIONAL DISASTER  
MANAGEMENT  
AGENCY



MALAYSIAN NATIONAL  
SECURITY COUNCIL

#### Entry Permission

- Short Term Stay
- Long Term Stay

#### One Stop Centre

[Business Travellers Centre](#)

#### Resources

- Announcement
- Download

#### FAQ

[Contact Us](#)

[Sitemap](#)

[www.mida.gov.my](http://www.mida.gov.my)

OSC Secretariat  
(Industry Talent Management  
and Expatriate Division)

Level 20, MDA Sentral  
No. 5, Jalan Stesen Sentral 5  
Kuala Lumpur Sentral  
50470 Kuala Lumpur

Tel: 03-2267 3633/3431

# Status of Implementation



## OSC Committee

### MYEntry-MIDA System

**Gone live on  
3<sup>rd</sup> March 2021**

## Website

### Dedicated Microsite

**Gone live on  
3<sup>rd</sup> March 2021**

## BTC

### Business Lounge

**To go live by 16 March  
2021 to welcome the  
first arrival of Short  
Term Business  
Travellers**

***Thank You***

*Welcoming Investors, Keeping You Safe*