



MINISTRY OF
INTERNATIONAL TRADE AND INDUSTRY

SAFE@WORK INITIATIVE FOR MANUFACTURING AND MANUFACTURING RELATED SERVICES

Objective

The COVID-19 pandemic has challenged the healthcare capacity of many countries including Malaysia. In Malaysia, this has also impacted the business community whereby from the Ministry of Health (MOH), the manufacturing sector recorded 6,208 new cases, in the period of 14-days until 15 July 2021. Hence, there is an urgent need to implement an action plan to secure safe working and living environment for the manufacturing sector. Thus, MITI introduced Safe@Work Initiative which was approved by Sidang Khas MKN chaired by YAB Prime Minister on 3 March 2021.

Safe@Work Initiative is a comprehensive SOP to create enhanced Public Health Measures@Work (Safe@Work) to empower employers to be accountable for containing the pandemic among workers.



Implementation of Safe@Work will:

1

Ensure business continuity – **safeguard Lives and Livelihoods**

2

Empower employers to be **accountable/responsible** for containing the pandemic/ any future crises

3

Create **Safe Work Bubbles** at companies with a **reformed digital strategy** (e-Tracking, Movement of Local/Foreign Workers, etc.)

4

Enhance awareness of industry and society on the importance of **Safe@Work**

Government will facilitate and encourage industry to adopt Safe@Work Initiative

PULL FACTOR

Avoid complete shut down of companies

MITI/MKN: Companies adopting Safe@Work will be given priority to operate during MCO/Future Crises

MOF: Additional tax deduction (a maximum of RM50,000 per company) for rental of premises/accommodation.

MOH/CPRC/DOSH:

- Transparent **guideline** for industry to follow in case of COVID-19 incident in factory.
- **Facilitation** on COVID-19 management and vaccination strategy - **PIKAS**
- Gazetted Price Range of **RTK-Antigen/RT-PCR tests** & ensure its Standards/Quality.
- **Expedite the reopening of premises** after cleaning and disinfecting.

PUSH FACTOR



JABATAN TENAGA KERJA SEMENANGUNG MALAYSIA

AKTA STANDARD MINIMUM PERUMAHAN, PENGINAPAN DAN KEMUDAHAN PEKERJA 1990 [AKTA 446]
Berkuat kuasa 1 Jun 2020

PERAKUAN PENGINAPAN
Majikan atau Penyedia Penginapan Berpusat WAZIB mendapatkan Perakuan Penginapan daripada Jabatan Tenaga Kerja Semenanjung Malaysia (JTKSM) sebelum menempatkan pekerja ke dalam penginapan.
Seksyen 24D (3)

TATACARA MENDAPATKAN PERAKUAN PENGINAPAN

- 01 Majikan atau Penyedia Penginapan Berpusat Menyediakan Penginapan Pekerja
- 02 Mendapatkan Kelulusan dari Pihak Berkuasa Tempatan atau Pihak Berkuasa Berkaitan
- 03 Membuat Permohonan Perakuan Penginapan daripada Jabatan Tenaga Kerja

SYARAT PENGINAPAN

- Kemudahan dan penginapan hendaklah mengikut standard yang ditetapkan.
- Semua kemudahan dan ruang dalam penginapan digunakan bagi tujuan asal dan tidak boleh diubah suai.
- Ubah suai penginapan yang mengubah bilangan penghuni penginapan perlu mendapat Perakuan Penginapan yang baharu.

PENALTI KESALAHAN MENEMPATKAN PEKERJA TANPA PERAKUAN PENGINAPAN
Denda RM50,000 atau penjara tidak lebih 1 tahun atau kedua-duanya
Seksyen 24D (3)

Bil. 3 / 2020 jtksm.moh.gov.my

MOHR/JTK:
Strict enforcement or continuous awareness of Act 446 (Workers' Minimum Standards of Housing and Amenities Act)



There is a need for a comprehensive public health management framework to create safe work bubbles for the manufacturing sector



Safe Work Bubble

- Safe Work Bubble is the **isolation** of a group of close contact workers from other workers in hostels and factories. The purpose of this safe work bubble is to **allow** close contact workers to continue working in the factory even if COVID-19 test results have not been obtained.
- Implementation of Safe@Work is **VOLUNTARY/ OPTIONAL**.
- Safe Work Bubble concept can also be applied to non-exposed workers to minimize the risk of infection.



Scenario:

Safe Work Bubble

Plant A

Plant B

Positive Cases
Extracted from Cohort
for Treatment



Close Contacts
(MY & FW)

Full Capacity



Close Contacts
(MY & FW)



Accommodation
Plant A



Accommodation
Plant B

Normal

Plant A

Plant B



Mixing of Workers



Accommodation for Plant A & B



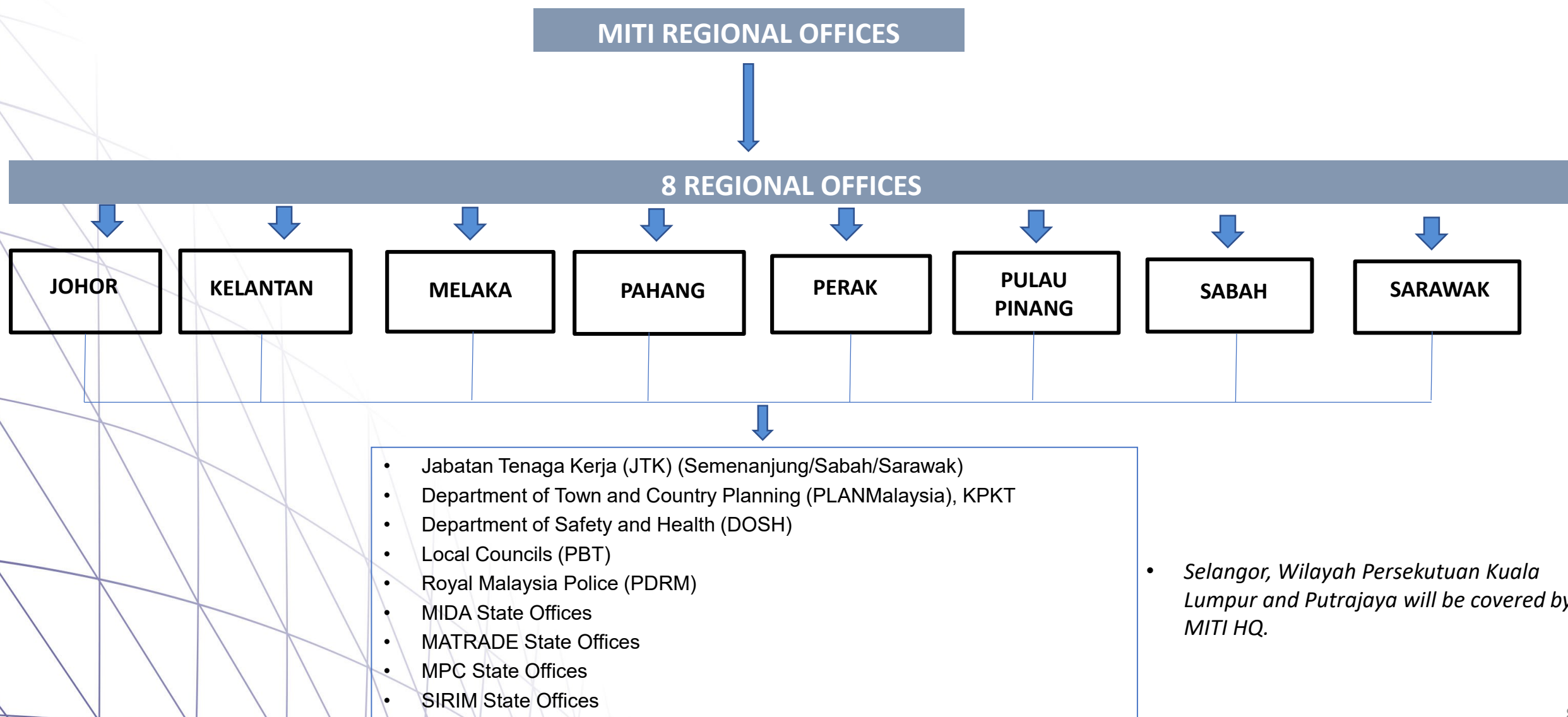
MINISTRY OF
INTERNATIONAL TRADE AND INDUSTRY

Elements under Safe@Work

1. Preventive Measures:
 - Health Screening
 - Workplace initiatives
2. Case and Contact Management:
 - Accommodation
 - Workers Transportation
3. Monitoring Mechanism



Governance Structure of Safe@Work Verification Team



SAFE@WORK APPLICATION

Number of Safe@Work Registration As at 20 July 2021

Total	4,071
Passing Mark ($\geq 70\%$)	3,623

Top 5 Applications By States

Selangor	1,243
Johor	834
Pulau Pinang	507
Perak	401
Kuala Lumpur	367

Top 5 Sub-Sectors

Automotive	566
M&E	537
Packaging	481
E&E	416
Food	326

Information on Safe@Work at MITI's website:

www.miti.gov.my

SELAMAT DATANG KE
PAUTAN PANTAS PORTAL RASMI
KEMENTERIAN PERDAGANGAN ANTARABANGSA & INDUSTRI

WELCOME TO
THE FAST LINK OF THE
MINISTRY OF INTERNATIONAL TRADE AND INDUSTRY
OFFICIAL PORTAL

SILA KLIK PAUTAN DI BAWAH UNTUK KOMUNIKASI YANG LEBIH CEPAT DAN PANTAS
PLEASE CLICK THE ICONS BELOW FOR A FASTER AND SPEEDY COMMUNICATION



MAKLUMAT BERKAITAN
SAFE@WORK

INFORMATION RELATED
TO SAFE@WORK



CIMS 3.0
PENDAFTARAN
OPERASI PERNIAGAAN
SEPANJANG TEMPOH
PKP

MCO REGISTRATION
FOR BUSINESS
OPERATION



MAKLUMAT AKTIVITI
BERKAITAN PKP

MCO-RELATED
ACTIVITY INFORMATION



SENARAI SOP YANG
BERKAITAN DENGAN
MITI

LIST OF MITI-RELATED
SOPs



LAMAN UTAMA PORTAL
RASMI MITI

MITI OFFICIAL PORTAL
MAIN PAGE



OFFICIAL PORTAL OF THE
MINISTRY OF INTERNATIONAL TRADE AND INDUSTRY

MAKLUMAT BERKAITAN SAFE@WORK
INFORMATION RELATED TO SAFE@WORK



INFOGRAFIK
INFOGRAPHIC



SOALAN LAZIM
FAQS



VIDEO
VIDEO



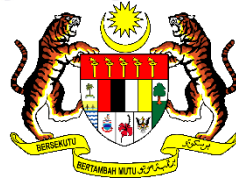
SIARAN MEDIA
MEDIA RELEASE



SOP
SOPs

SOP for Safe@Work for Manufacturing and its Related Services:

- i. This SOP should be read together with the General SOP for current MCO including matters related to cafeterias, public restrooms and places of worship; and**
- ii. The implementation of this SOP is on a voluntary basis.**



MINISTRY OF
INTERNATIONAL TRADE AND INDUSTRY

Thank You

Follow us



Our Agencies



Menara MITI, No. 7, Jalan Sultan Haji Ahmad Shah, 50480 Kuala Lumpur, Malaysia.
Tel : 603-8000 8000 | Fax : 03-6206 4693