

#ReconnectingSafely

A collaboration between the Malaysian & Singaporean Government



MINISTRY OF
INTERNATIONAL TRADE AND INDUSTRY



VACCINATED TRAVEL LANE (VTL) - LAND FOR MALAYSIA AND SINGAPORE

Guide for Malaysians and Singaporeans for cross-border
movement via land route

Edition 2





About VTL-Land between Malaysia & Singapore

The VTL-Land initiative between Malaysia and Singapore was introduced to reconnect Malaysians and Singaporeans who have been separated from their family members or employers due to the COVID-19 pandemic. The VTL-Land commences on 29 November 2021.

1

Read

Read this guide thoroughly to ensure a smooth travel experience

2

Prepare

Get the necessary documentations ready

3

Travel

Start your travel safely

Travellers Categories



Malaysia and Singapore citizens



Malaysia and Singapore
Permanent Residents



Malaysia and Singapore
Long-term Pass holders

**Travellers must remain in either one country for at least 14 consecutive days before departure*



Adults **MUST** be fully vaccinated

Unvaccinated children below 12 years old **MUST**
be accompanied by vaccinated adults

#ReconnectingSafely

A collaboration between the Malaysian &
Singaporean Government





Fact file

Travellers Registration	<ul style="list-style-type: none"> • www.mysafetravel.gov.my (Singapore to Malaysia) • https://go.gov.sg/vtl-portal (Malaysia to Singapore, for Long-Term Pass Holders only. Singapore citizens need not apply)
Mode of transport	<ul style="list-style-type: none"> • VTL-Land designated buses
Where to buy tickets	<ul style="list-style-type: none"> • www.causewaylink.com.my • www.transtar.travel
Bus operating hours	<ul style="list-style-type: none"> • From Singapore : 9.30 am to 7.30 pm • From Johor: 7.30 am to 6.45 pm
Check-in time	<ul style="list-style-type: none"> • At least 2 hours earlier of departure time
Boarding and disembarkation points	<ul style="list-style-type: none"> • Larkin Sentral Bus Terminal (Johor) • Queen Street Terminal (Singapore) • Woodlands Temporary Bus Interchange (Singapore)



Testing protocol

- Professionally administered antigen rapid test (ART/RTK) or polymerase chain reaction (PCR) test 2 days prior to departure date 48 hours prior to departure date
- On-arrival test at Larkin Sentral Bus Terminal (Johor) only

Vaccination certificate (with QR Code)

- Via MySejahtera if vaccinated in Malaysia
- Via Notarise portal, HealthHub, TraceTogether if vaccinated in Singapore

Vaccinated Travel Pass

- <https://go.gov.sg/vtl-portal> (long-term pass holders travelling from Malaysia to Singapore only)

Travel / Medical insurance

- Travellers in Malaysia entering Singapore should ensure they have sufficient insurance coverage for COVID 19-related medical treatment and hospitalisation costs (minimum coverage of SGD30,000)

Quarantine requirement

- No quarantine required

Useful URLs

- <https://www.mysafetravel.gov.my>
- <https://www.miti.gov.my>
- <https://www.mot.gov.my>
- <https://safetravel.ica.gov.sg>



VTL-LAND TRAVELLER'S JOURNEY



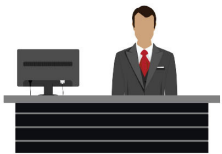
1

Pre-Departure

Prepare these softcopies:

- 1) Digital vaccination certificate
- 2) Vaccinated Travel Pass
(only for long-term pass holder travelling from Malaysia to Singapore)

Download MySejahtera app or Singapore Trace Together app



2

Register at www.mysafetravel.gov.my (Singapore to Malaysia) or <https://go.gov.sg/vtl-portal> (Malaysia to Singapore)



3

Print Vaccination Certificate with QR code, Vaccinated Travel Pass (for long-term pass holder travelling from Malaysia to Singapore), travel/medical insurance are also recommended for travellers entering Singapore



4

Purchase bus ticket(s) via www.causewaylink.com.my or www.transtar.travel



5

Take RTK or ART / PCR Test 48 hours before departure



VTL-LAND TRAVELLER'S JOURNEY



6

On departure day arrive at least 1 hours earlier at boarding points



7

At Departure Points



Ensure these documents are in-hand:

- Proof of VTL-Land Registration for travellers entering Malaysia
- Proof of Vaccinated Travel Pass (only for long-term pass holder travelling from Malaysia to Singapore)
- RTK or ART / PCR Test results
- Vaccination Certificate
- Passport
- Travel/Medical Insurance (recommended for travellers entering Singapore)
- Bus Ticket



8

- For Malaysians, please submit the SG Arrival Card (SGAC) under Foreign Visitors
- For Singapore Citizens, please submit electronic Health Declaration Card (eHDC) under Singapore Citizens, Permanent Residents & Long-Term Pass Holders, and upload your vaccination certificate QR code during the submission if you were vaccinated overseas



9

Upon-Arrival

- For travellers arriving at the Larkin Sentral Bus Terminal, proceed to do the On-Arrival Test
- Present all documentations at the immigration for clearance



10

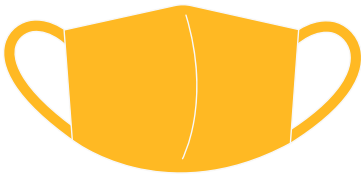
Post-Arrival

Check traveller's status on MySejahtera app or Singapore Trace Together app

Health protocol



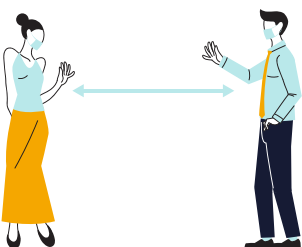
Up to 45 people
in a bus



Passengers must wear the
face mask throughout the
journey and maintain
physical distancing



Bus to be sanitised prior to
departure and after arrival



Self-care is your
best defense

#ReconnectingSafely

A collaboration between the Malaysian &
Singaporean Government





REQUIREMENTS FOR MALAYSIA-SINGAPORE VTL-LAND TRAVELLERS

**TO ENTER
MALAYSIA**

**TO ENTER
SINGAPORE**

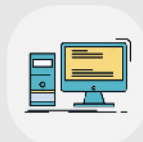


Digital Vaccination Certificate

Download MySejahtera app or
Singapore Trace Together app



Vaccinated Travel Pass (VTP)
via url <https://go.gov.sg/vtl-portal>
(only for long-term pass holder travelling
from Malaysia to Singapore)



Register at www.mysafetravel.gov.my
(Singapore to Malaysia)



Print Vaccination Certificate
with QR code



Print Vaccinated Travel Pass (VTP)
(only for long-term pass holder travelling
from Malaysia to Singapore)



Purchase bus ticket(s) on
www.causewaylink.com.my
www.transtar.travel



Take professionally administered
ART/PCR Test 2 days before departure



On-arrival RTK Test at
Larkin Sentral Bus Terminal



Submit SG Arrival Card (SGAC)
under Foreign Visitors



Electronic Health Declaration Card (eHDC)
via MySejahtera

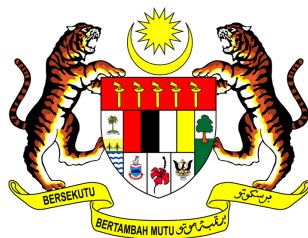


Note : Travellers are advised to have adequate travel / medical insurance coverage for
COVID-19 related medical treatment and hospitalisation costs, if required.

#ReconnectingSafely

A collaboration between the Malaysian &
Singaporean Government

Visit www.miti.gov.my for more details



**MINISTRY OF
INTERNATIONAL TRADE AND INDUSTRY**

#ECONOMICFRONTLINERS

