

NGSC KL



Sustainability

Novartis Malaysia
September 2022

Global Commitment/ Target



People

We will encourage associates across our operations to adopt an environmental sustainability mindset.



Patients

We will work to understand how a changing climate will impact people's health.
We will deliver environmentally sustainable medicines to people that need them.



Planet

We will minimize the impact of our actions on the planet and invest in environmental solutions that also protect biodiversity.
Through our value chain, we will benefit ecosystems and planetary health in general.



Climate

Be energy and climate resilient

2025

All Novartis sites to be carbon neutral

Environmental criteria in all supplier contracts

2030

Be fully carbon neutral across the value chain



Water

Ensure sufficient and safe water by being a water steward wherever we operate

All Novartis sites to reduce the amount of water consumed by half

No water quality impacts from the manufacturing of our products

Be water neutral in all areas

Enhance water quality wherever we operate



Circular Economy

Minimize waste and increase material efficiency

Reduce the amount of waste sent for disposal by half

Eliminate PVC from secondary and tertiary packaging

Become plastic neutral

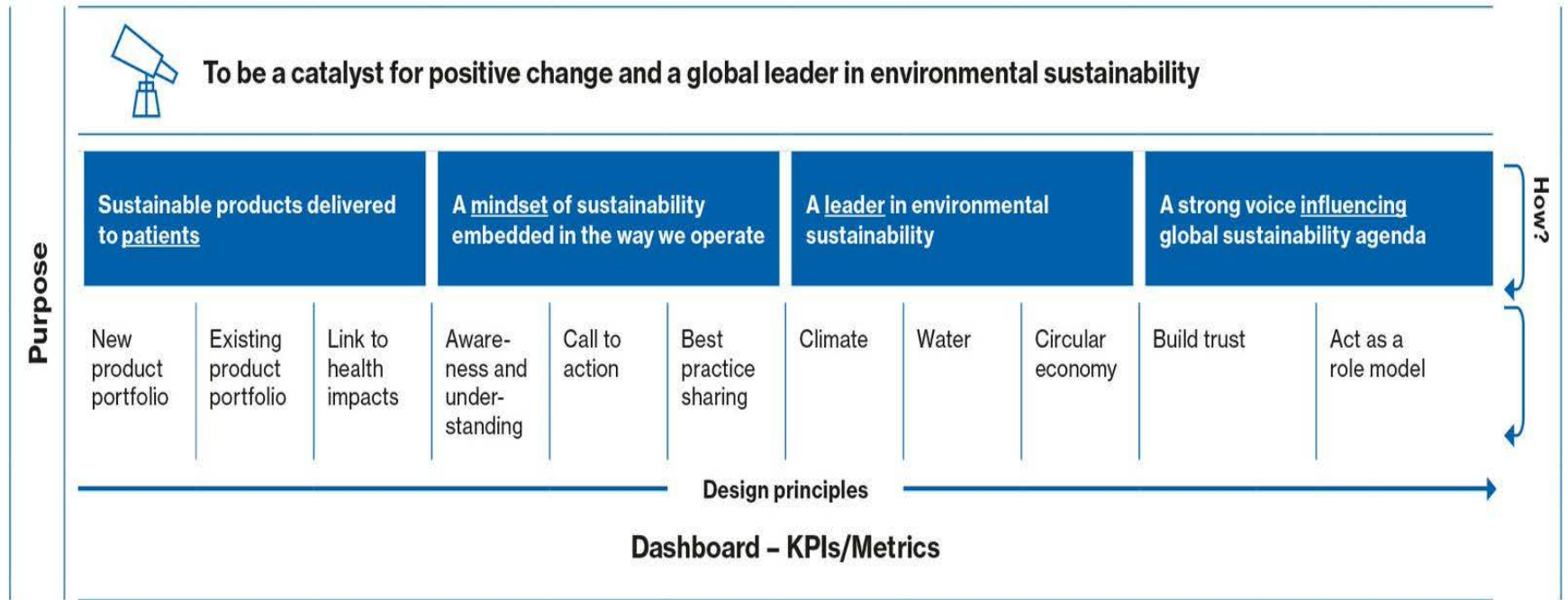


Innovation

We will use data and technology-based tools to boost our agility to respond to future challenges.
All new products will meet sustainable design principles.

strategic response

We have defined four strategic objectives and have established working groups, underpinning our overarching environmental sustainability strategy.



Imazium

NOVARTIS MALAYSIA OFFICE IMAZIUM OFFICE

Location: Kuala Lumpur, MALAYSIA

Population: 900++ HC (IMI, Sandoz, Novartis Operation)

Area: 2 Floors, total 44K sqft

Sustainability

- Our new office aims to reduce furniture wastage and adopt a sustainable approach in design and construction

Diversity & Inclusion

- Our new office aims to create an inclusive and supportive workplace:
 - cater to diverse needs of our associates (cultural, religious needs etc)
 - where every associates feels comfortable bringing their whole selves to work

What's NEW!



SUSTAINABILITY



CONNECTING



COLLABORATION



TECH & AV



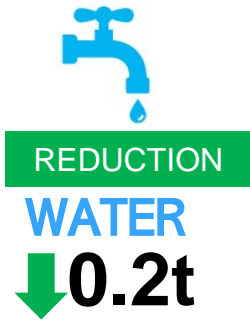
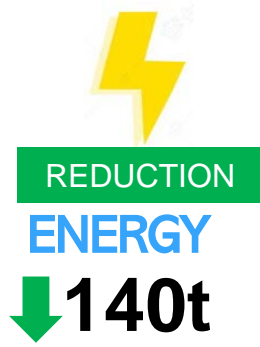
collaboration floor | **meeting room with studio capability** | kopitiam | green & wellness space | library | furniture lab | LEED Gold building | surau | mother's room | hackable space

KL NGSC – SUSTAINABILITY @ IMAZIUM



t CO2e
(Ton CO2 equivalent)

523t CO2 baseline



High level estimates of target reduction for project

KL NGSC – SUSTAINABILITY @ IMAZIUM



LEED & WELL CERTIFICATION



ROBUST RECYCLING PROGRAM



- Metal
- Plastic
- Paper
- Food waste
- E-Waste
- Milk carton

1171

REUSED FURNITURE & WHITE GOODS



X 382
100%



X 336
75%



X 83
100%



X 200
42%



X 108
29%

SUSTAINABLE FURNITURE



23%
RECYCLED
COFFEE GROUND



9600
RECYCLED
CHOPSTICKS



LOCALLY
RECYCLED
PET



100%
OCEAN
PLASTIC

Energy Savings

79%

Drop in percentage compare to Plaza 33 kWh usage

100,482 Kg/co2e

Carbon Footprint drop compare to Plaza 33

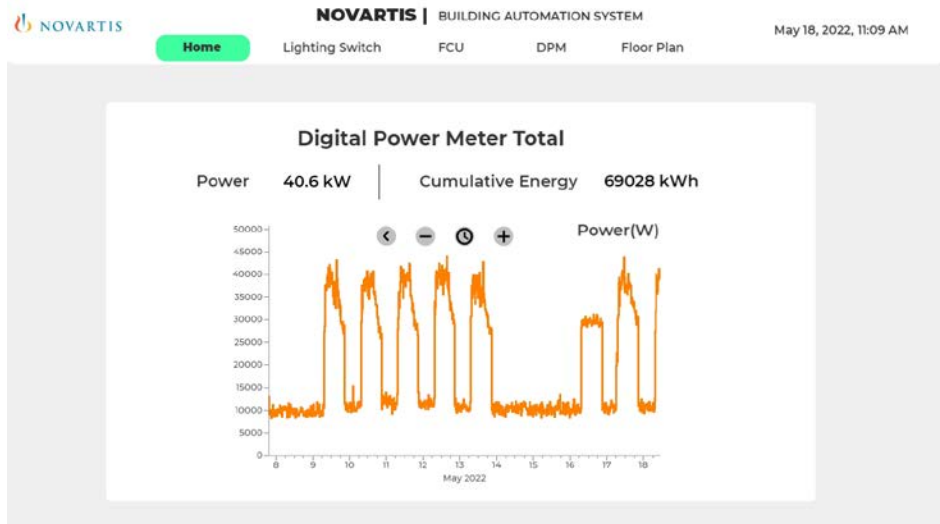
4,861

of trees offset by reducing Carbon Footprint

Waste Generation and Recycling



Data Recording / Monitoring System



**Real Time data on Power usage. To identify any leakage*

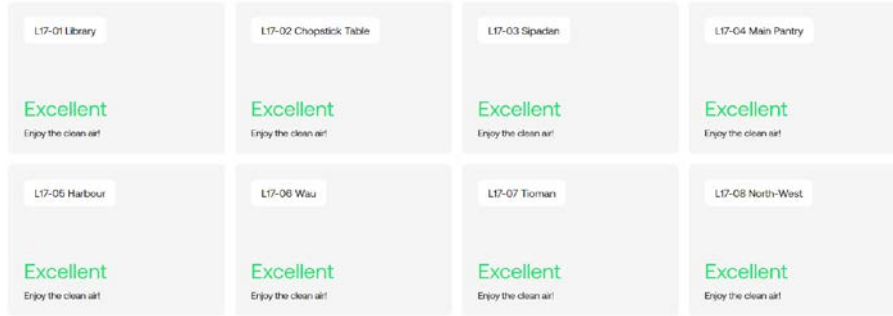
**Kwh monthly data monitoring*

Timestamp	DPMENERGY TOTAL	Total	HDD 20/12 [°C]
March 2022	6354.00	6354.00	0.00
	6354.00	6354.00	0.00

Statistics	DPMENERGY TOTAL	Total	HDD 20/12 [°C]
Max	6354.00	6354.00	0.00
Timestamp of Max	March 2022	March 2022	March 2022
Min	6354.00	6354.00	0.00
Timestamp of Min	March 2022	March 2022	March 2022
Average	6354.00	6354.00	0.00
Sum	6354.00	6354.00	0.00

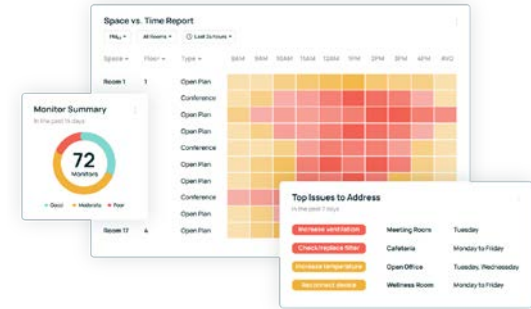
Kaitera – LEED & WELL Certified

“High-performance building start with indoor air quality”



Powered by Kaitera

Good data provides
Actionable improvements insights



- Kaiterra helps Novartis KL go beyond data points and graphs, it gives us clean and simple insight into our space’s environment.
- Improves our IAQ monitoring and system management



Novartis KL 'GO GREEN' team

Pillars | Work streams Breakdown

Paperless

- Paper spend and usage study / paper flip chart reduction
- Printer reduction
- Items to electronic version (medical claim, onboarding materials, T&E claims)

Utilities

- Energy consumption usage study
- Environmental talk (Plastic, Mangroove & Tree Planting)

Recycling

- Donation drives
- Bring a bag/take a bag
- Recycling bins/paper recycling instructions/partnership with companies

Plastic Free

- SUP elimination driven by Region
- BYO bottle included in welcome deck
- Study on catering and support from procurement, new guidelines
- Plates, cutlery for small caterings

Innovation and Other

- Re-use furniture for ABW
- Events
- Donation drives
- Habits change (sponge use, pantry paper)

Go Green Photo Contest



Novartis **Go Green** team held a photo contest for associates. The **objective** of this competition is to **raise awareness** to associates about **sustainability** efforts and the most simple and creative form; by taking pictures that can convey the message.

Plastic Free



Plastic Stirring Spoon

100% Reduction



Plastic Straws

100% Reduction



PET

100% Reduction



Plastic Bottles

100% Reduction



Plastic cutlery

100% Reduction



Clamshell & Takeaway Cont

100% Reduction



One way disp

100% Reduction



Umbrella Bag

100% Reduction




Single Used Coffee Cups & Plastic Lids

100% Reduction




Wrappers

100% Reduction




Cream Pods

100% Reduction



Lotion Bottles

100% Reduction



Pens

In Progress



Wet Wipes

100% Reduction



Thank you