

# MYNe>xt

---

BY TALENTCORP

**A Talent Solutions for Industry**





Presented by:

**Simon Ang**  
**MYNEXT – A Talent Solutions for Industry**  
**MYNEXT Sdn Bhd**  
14 November 2022

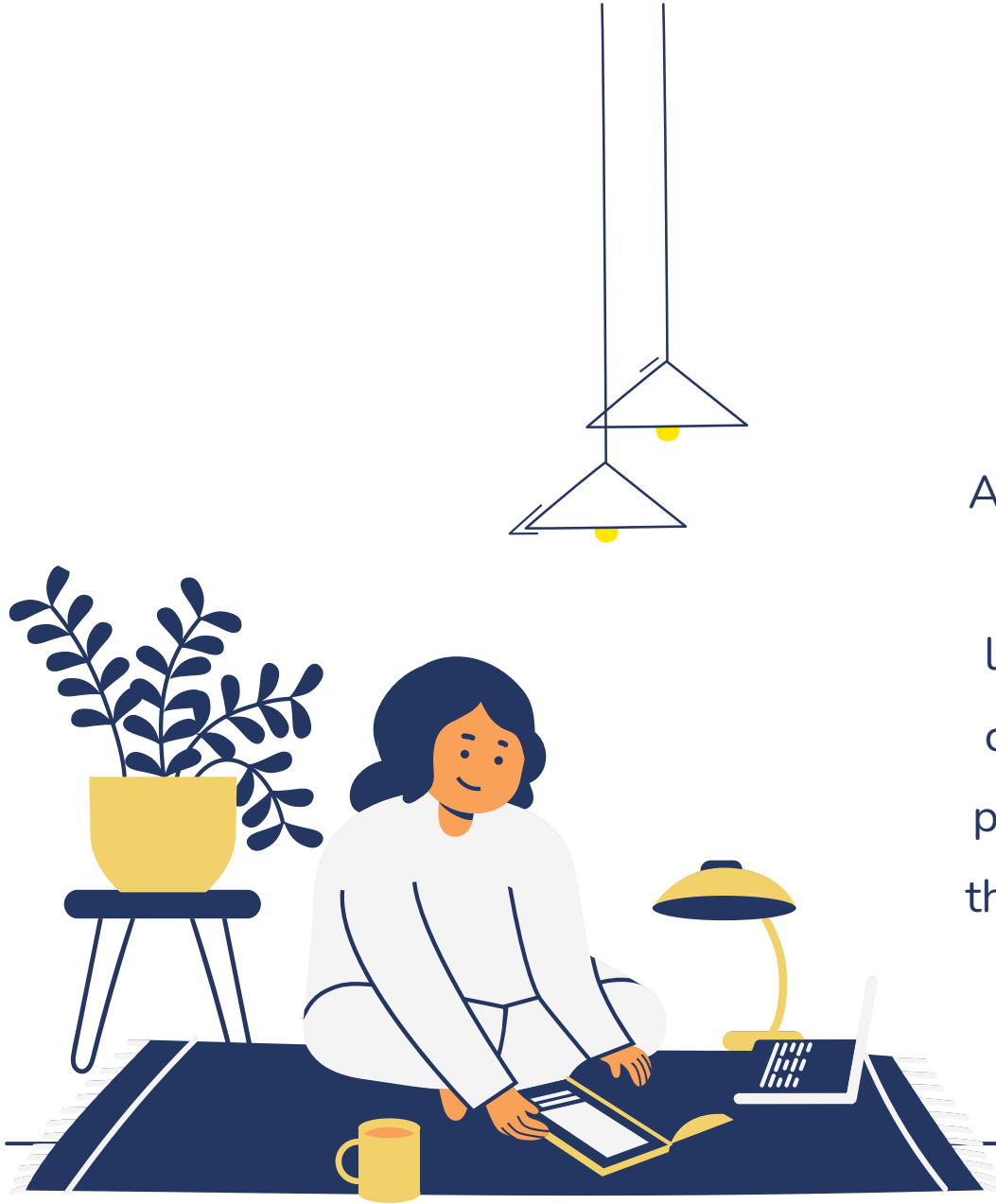
# MYN>xt

## A Talent Solutions for Industry



# mynext

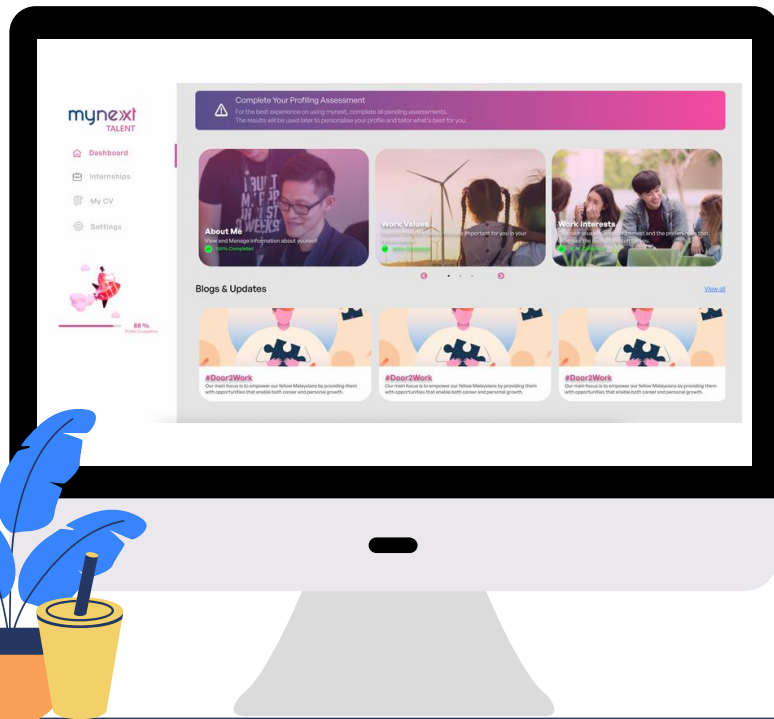
A vital link between education and future employability, as well as setting individuals on a path of fulfilled lifelong learning journey and purpose by helping them define and chart their career path through an all-in-one, easy-to-use platform that brings students, companies, universities, and the workforce together as an integrated talent solution and analytics platform.



# WHY mynext

MYNEXT under TalentCorp Group of Companies. To summarise, MYNEXT is an initiative endorsed by the Ministry of Human Resources (MOHR) and Ministry of Higher Education (MOHE), that aims to support the national workforce by integrating talent solutions and analytics onto one platform, with a focus on bridging the gap between Malaysia's talent supply to future jobs via TalentCorp

# OUR PRODUCTS



## mynext Talent

Supports students and individuals of the workforce by providing access to profiling tools that enables them to discover their strengths, interests, most employable traits, and connect them directly to ideal internship programmes.

## mynext University

Supports institutes of higher learning with data and information that enables the development of training programmes and curricula that are in line with current industry demands, whilst addressing the needs of individual students.

## mynext Company

Supports the national workforce by integrating talent solutions and analytics onto one platform, with a focus on bridging the gap between Malaysia's talent supply to future jobs via TalentCorp's Structured Internship Programme (SIP).

## mynext PROFILING SUITE

A series of assessments curated by experienced psychologists and educationalists that aim to help students understand their readiness to enter the workforce



### Work Values

Uses Ventegodt's Quality of Work Life framework to make fully informed career choices

### Work Interests

Uses the RIASEC model to identify the kind of work they would feel most fulfilled at doing

### Personality & Motivation

Uses OCEAN model to identify unique personal profile how it influences motivation

### The Future of Work

Uses McKinsey 4 Domains (Cognitive, Interpersonal, Self-Leadership and Digital) to identify competencies to be developed

### Employability

Uses EntreComp Framework to identify personal competencies that affects employability in today's world of work

### Career Explorer

Explore potential career paths that match personal profiling

## GAIN UNDERSTANDING OF YOURSELF

- Greatly assist in discovering your abilities and traits
- Provides great journey of self-development



## CAREER MATCH

- Helps you understand what values that are a priority to you
- Help discover alignment of values when applying to different jobs



## EMPLOYEE DEVELOPMENT

- Personalised results and in giving you guidance on the action steps to take for traits improvement.
- Helps you become a better leader, allowing you to achieve your work goals through working on your soft skills.



### Hire the Right Person

Hire the right cultural fit, with a blend of assessments tuned to find the perfect job fit.

- Campus & Off-Campus Hiring
- Lateral Hiring
- Leadership Hiring



### Develop Right

Identify key developmental areas for each employee to create a customised L&D roadmap.

- Hi-Po Identification
- Training Needs Identification
- Training Effectiveness



### Make Better Leaders

Groom leaders from employees today, to ensure the creation of a solid leadership pipeline for the future.

- Succession Planning
- Leadership Development

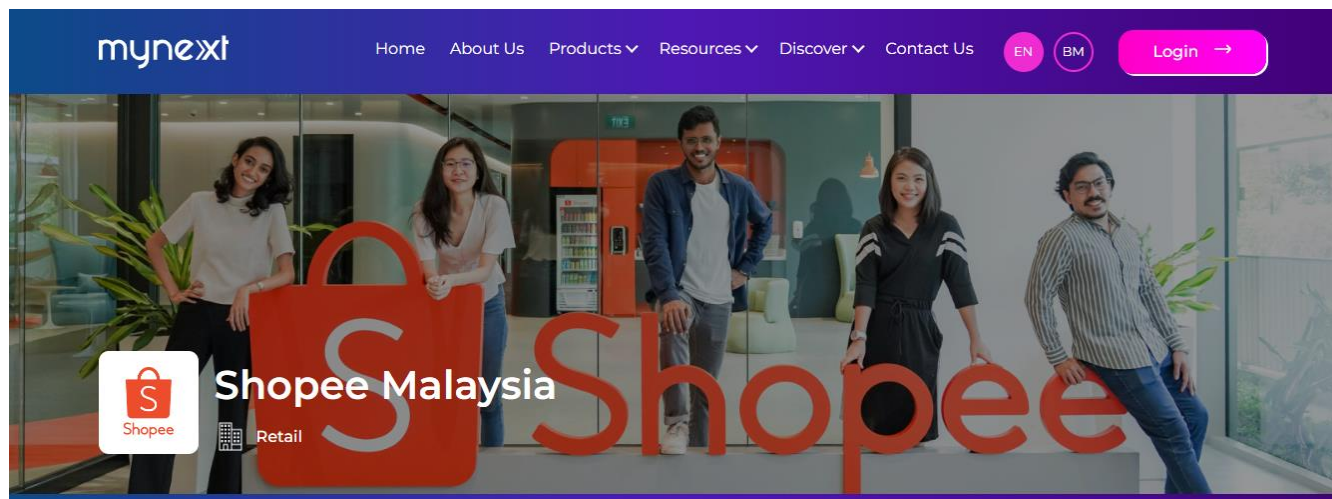


### Better Business Outcomes









**TalentCorp**  
GROUP OF COMPANIES

#### About Us

- Shopee is the leading e-commerce platform in Southeast Asia & Taiwan. Shopee promotes an inclusive and sustainable digital ecosystem by enabling businesses to digitalise and grow their online presence, helping more people access and benefit from digital services, and uplifting local communities.

Shopee offers an easy, secure, and engaging experience that is enjoyed by millions of people daily. Shopee is also a key contributor to the region's digital economy with a firm commitment to helping homegrown brands and entrepreneurs succeed in e-commerce.

Shopee is part of Sea Limited (NYSE: SE), a leading global consumer internet company. Sea's mission is to better the lives of consumers and small businesses with technology through its three core businesses: Shopee, Garena and SeaMoney.

#### Benefits of the company:

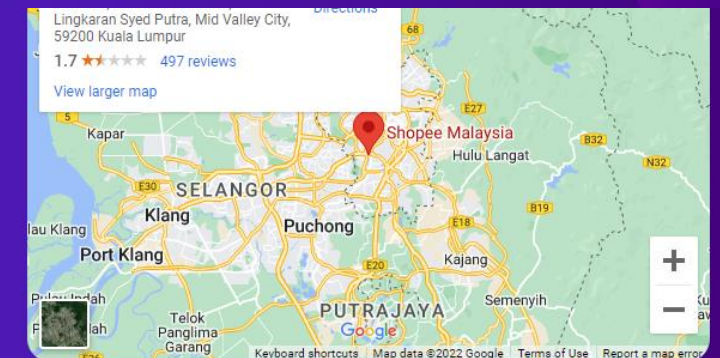
casual dress code, Mondays breakfast, learning and development courses, team building, interest clubs

#### Our Office



#### Our Address

Level 25, Southpoint Mid Valley City, Lingkaran Syed Putra, 59200 Kuala Lumpur







# INTERNSHIPS ENDORSED BY TALENTCORP



## General Internship

- ✓ No minimum period of internship
- ✓ No internship framework required
- ✓ No minimum allowance required
- ✓ Ineligible for double tax deduction incentives

## National Structured internship Programme (MySIP)

- ✓ Malaysian Citizen
- ✓ Minimum of 10 weeks period of internship
- ✓ Pay a minimum monthly allowance of RM600 for master's degree, bachelor's degree, and Professional Certificate or equivalent
- ✓ Pay a minimum monthly allowance of RM500 for diploma/Malaysian Skills Certificate (SKM) Level 1 to Level 5 or equivalent
- ✓ Provide an internship framework approved by TalentCorp
- ✓ Registered with Companies Commission of Malaysia (SSM)
- ✓ Eligible for double tax deduction incentives for allowances and up to RM5000 additional incentives for expenses incurred throughout internship

## SAMPLE CALCULATION

### MONTHLY ALLOWANCE

RM 1,000 (Interns monthly allowance) x 6 months = **RM 6,000**

After submission, reviewed and received LOE – RM 6,000 x 2 (**Double Tax Deduction - MySIP**) = **RM 12,000**

### ADDITIONAL INCENTIVES FOR EXPENSES

**RM 5,000** additional incentives for expenses incurred throughout internship

- Training allowance (External)
- Transport allowance
- Accommodation allowance
- Meal allowance
- Digital allowance

### TOTAL

**RM 12,000 + RM 5,000 = 17,000 / Interns x 10 interns = RM 170,000 #**

# THE PERKS



## Hire the Right Person

Hire the right cultural fit, with a blend of assessments tuned to find the perfect job fit.

- Campus & Off-Campus Hiring
- Lateral Hiring
- Leadership Hiring



## Develop Right

Identify key developmental areas for each employee to create a customised L&D roadmap.

- Hi-Po Identification
- Training Needs Identification
- Training Effectiveness



## Make Better Leaders

Groom leaders from employees today, to ensure the creation of a solid leadership pipeline for the future.

- Succession Planning
- Leadership Development



## Better Business Outcomes





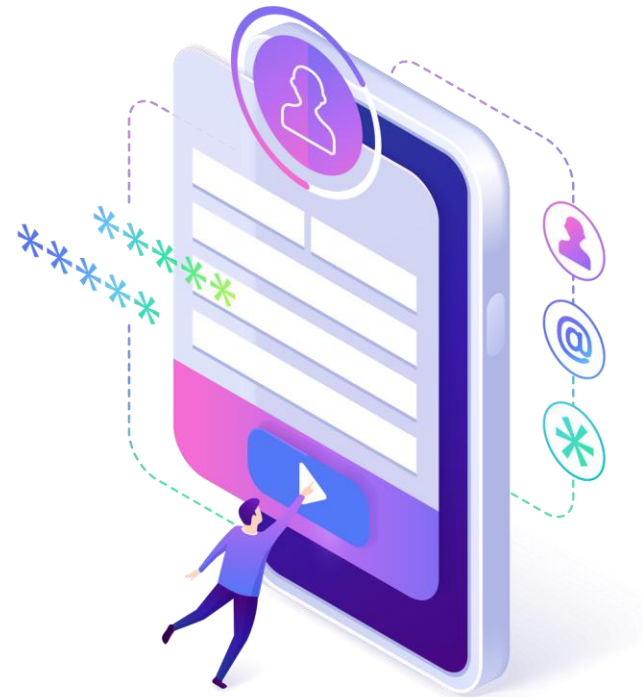
# WHAT YOU'LL NEED

## To have a valid corporate email account:

- ✓ One email is valid for one company. Therefore, parent and subsidiaries companies need to have unique email addresses

## To have below organisation's information:

- |                         |                         |
|-------------------------|-------------------------|
| ✓ SSM Number            | ✓ Sector                |
| ✓ SSM Registration Date | ✓ Nature of Business    |
| ✓ Address               | ✓ Organisation Contacts |
| ✓ Type of Organisation  |                         |



Register now at:



[company.mynext.my](https://company.mynext.my)

# THANK YOU

GET IN TOUCH

**Talent Corporation Malaysia Berhad** 201001035653

E-mail **info@talentcorp.com.my**  
Website **www.talentcorp.com.my**

**Malaysia Expatriate Services Centre Sdn Bhd** 201301004330

E-mail **helpdesk@myxpats.com.my**  
Website **www.myxpats.com.my**

**MYNext Sdn Bhd** 200901017217

(formerly known as GEMS Malaysia Sdn Bhd)  
E-mail **hello@mynext.my**  
Website **www.mynext.my**



**TalentCorpMsia**