

SESSION WITH THE EMBASSY OF THE KINGDOM OF THE NETHERLANDS

# **SARAWAK: THE REGION'S NEW GROWTH FRONTIER**



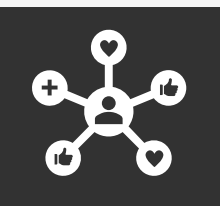
**ECONOMIC PLANNING UNIT  
SARAWAK**





Introduction to:

# ECONOMIC PLANNING UNIT SARAWAK



## Central Agency

EPU Sarawak is the central agency under the Department of the Premier of Sarawak

**PCDS  
2030**

## Strategic Planner

Formulate medium- and long- term socioeconomic development plans for Sarawak



## Facilitator

Monitors and evaluates the performance of Sarawak development plans



## Research & Analysis

Conduct socioeconomic studies for Sarawak



**Level 6, Wisma Bapa Malaysia  
Kuching, Sarawak**

# Sarawak at a glance

## GDP

**RM148.7 billion**

2024



**3.9%**

Sector	Total
Agriculture	RM15.14 Billion
Mining & Quarrying	RM29.95 Billion
Manufacturing	RM39.03 Billion
Construction	RM5.97 Billion
Services	RM58.21 Billion

## Total Investment

**RM7.58 billion**

2024

Domestic	Foreign
RM3.83 Billion	RM3.75 Billion

### **Approved Investment** in Manufacturing Sector

- Chemical & Chemical Products
- Electric & Electronic Products
- Miscellaneous Products
- Non-Metallic Mineral Products
- Basic Metal Products

# Sarawak – Netherlands Trade Overview

## Top 3 Imports

Mineral Waxes	Boilers and Machinery	Fish And Crustaceans
---------------	-----------------------	----------------------



## Top 3 Exports

Basic Metals	Animal & Vegetable Oils	Mineral Fuels and Oils
--------------	-------------------------	------------------------



# AGRICULTURE AND INNOVATION

**>60%**

Rice Self-Sufficiency  
Level by 2030

- Commercial Paddy Cultivation
- Commercial Food Crops: Agropark Model
- Downstream Processing: CCPC & Agrofood terminal
- Smart Farming: Sarawak Agrotechnology Park (SARTECH) & Precision Farming Park
- Livestock industry Development – FMD-Free Status

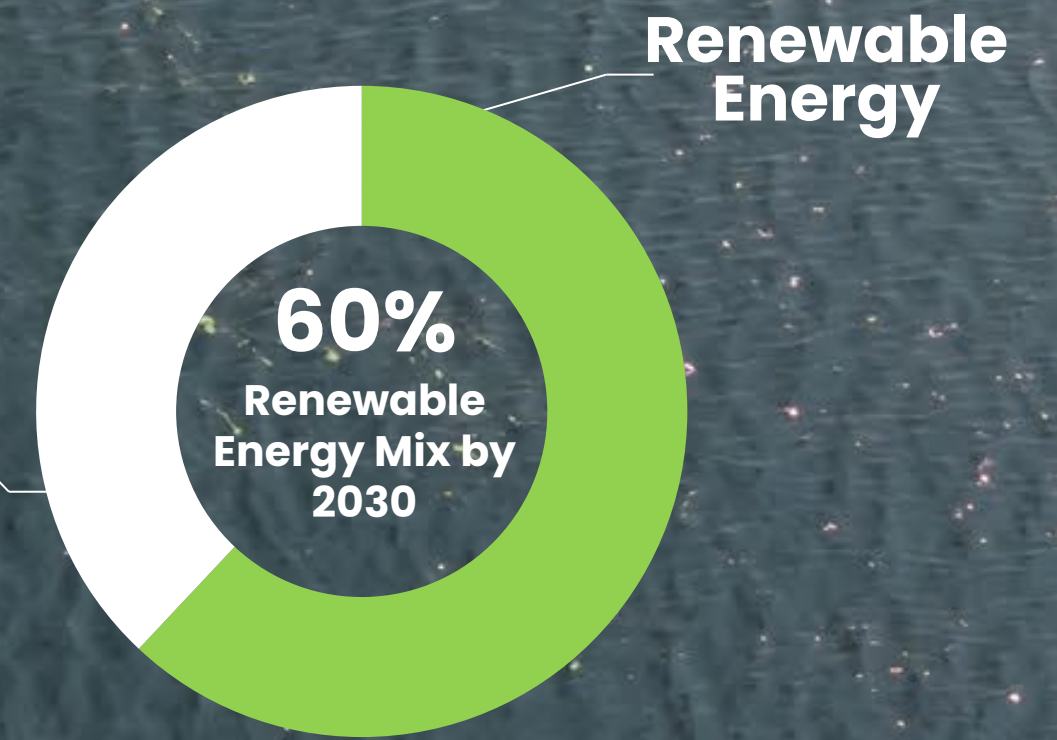
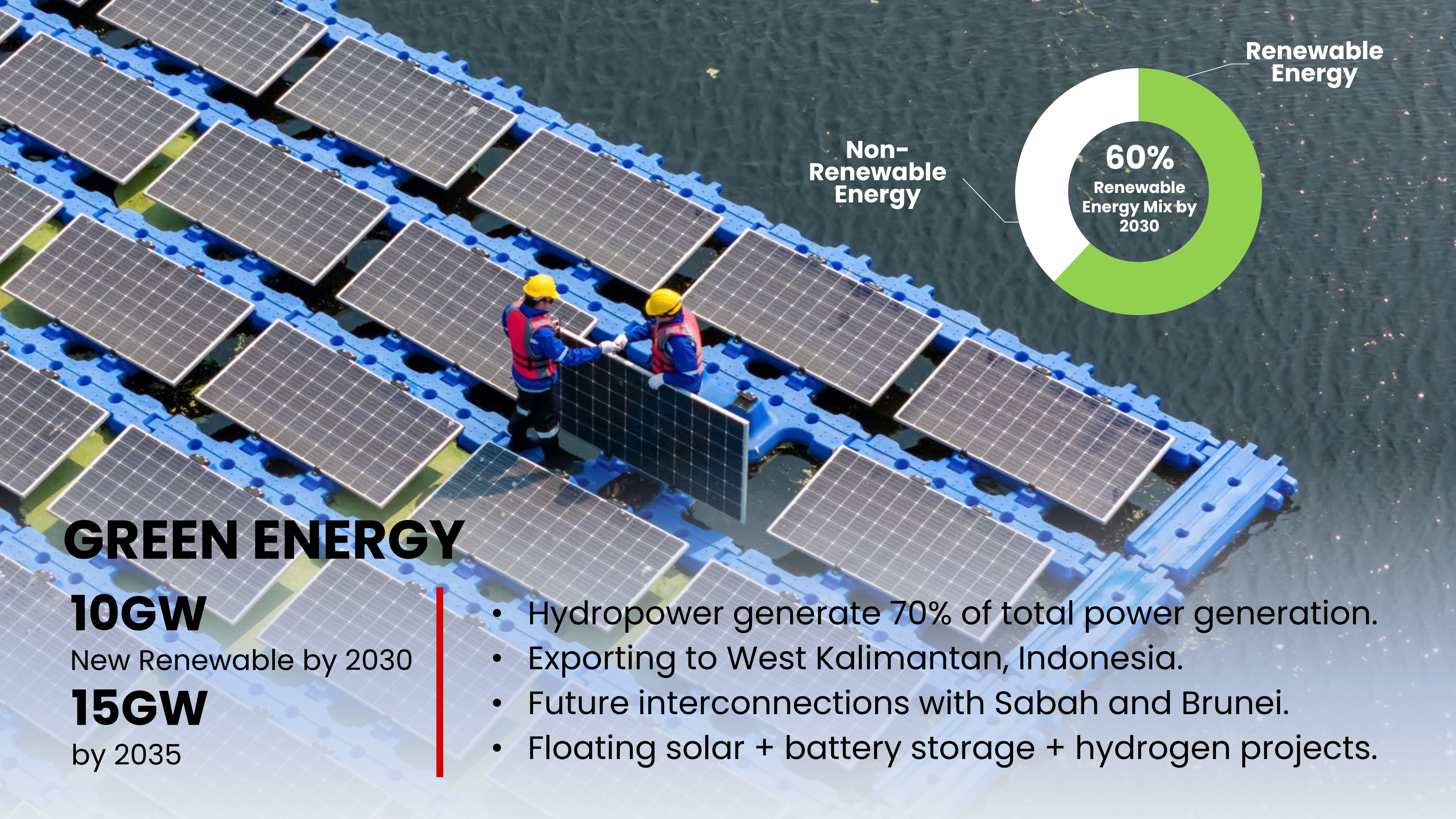


# WATER & FLOOD MANAGEMENT

## RM2.1 Billion

Invested in flood mitigation projects between 2021 and 2025

- Structural works: dams, river diversion, drainage upgrades
- Non-structural: SUStoM (urban stormwater), flood forecasting
- Coastal erosion protection (Pantai Tusan, SK Badengan)
- Nature-based: mangrove & wetland restoration



# GREEN ENERGY

**10GW**

New Renewable by 2030

**15GW**

by 2035

- Hydropower generate 70% of total power generation.
- Exporting to West Kalimantan, Indonesia.
- Future interconnections with Sabah and Brunei.
- Floating solar + battery storage + hydrogen projects.



# GREEN ENERGY

**10GW**

New Renewable by 2030

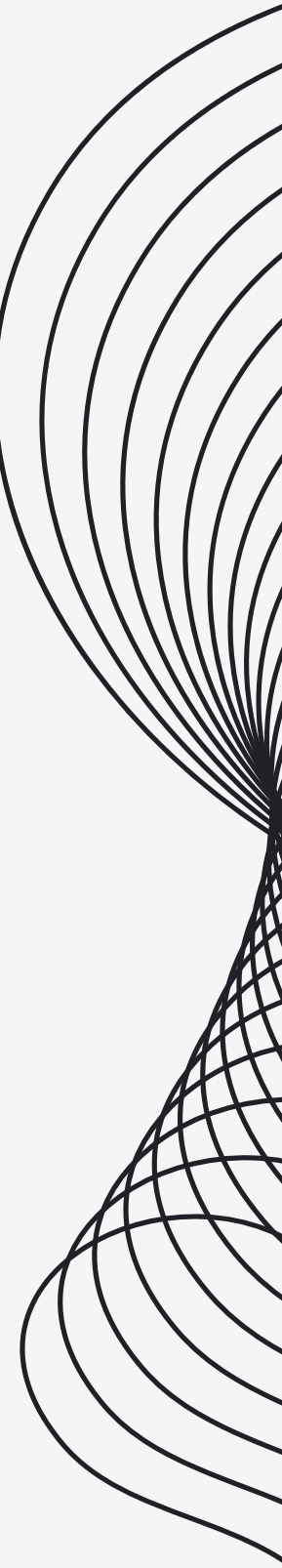
**15GW**

by 2035

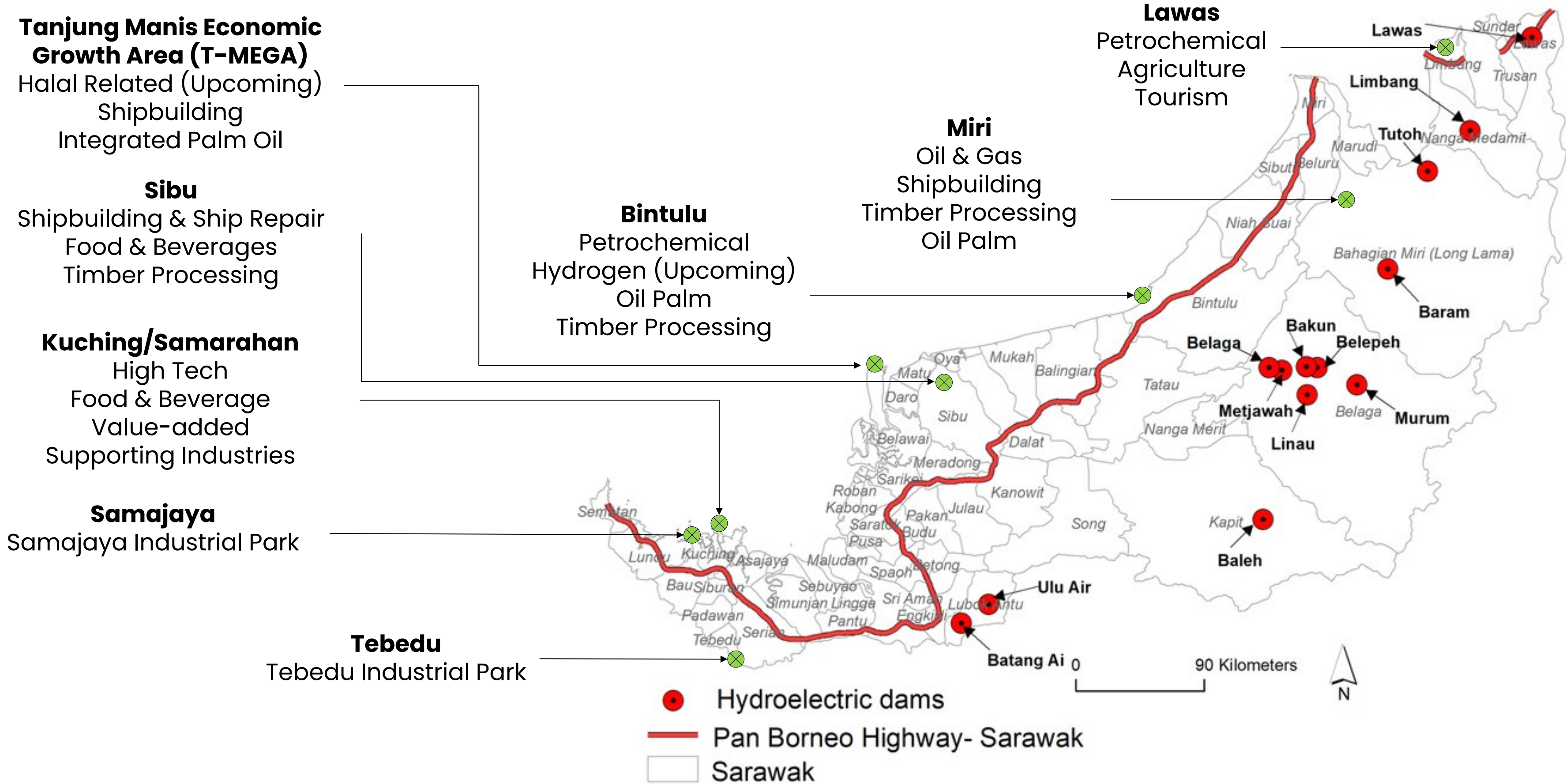
- Wood pellets from plantation thinning and forest residues (export to Japan/Korea and Europe).
- Biomass innovation: Napier grass → pellets
- Scaling Napier grass feedstock for co-firing and bio-SAF



# **EMERGING SECTORS IN SARAWAK**



# Major Manufacturing Industries in Sarawak





# AEROSPACE ACADEMY

Sarawak is positioning itself for maintenance, repair, and overhaul (MRO) services, with interest in drone technology and aviation logistics.

An aerial photograph of a floating solar farm. The solar panels are mounted on a grid of blue plastic buoys that float on a body of water. Two workers wearing yellow hard hats and blue safety vests are standing on the blue buoy platform, working on one of the solar panels. The panels are arranged in a staggered grid pattern across the water's surface.

# Floating Solar

50MW floating solar farm at  
the Batang Ai Hydroelectric  
Plant



# Sarawak Battery Energy Storage System (**BESS**)

60MW Sejingkat Battery Energy Storage System, Malaysia's first utility-scale BESS



# Hydrogen

Emerging  
solutions

green

energy

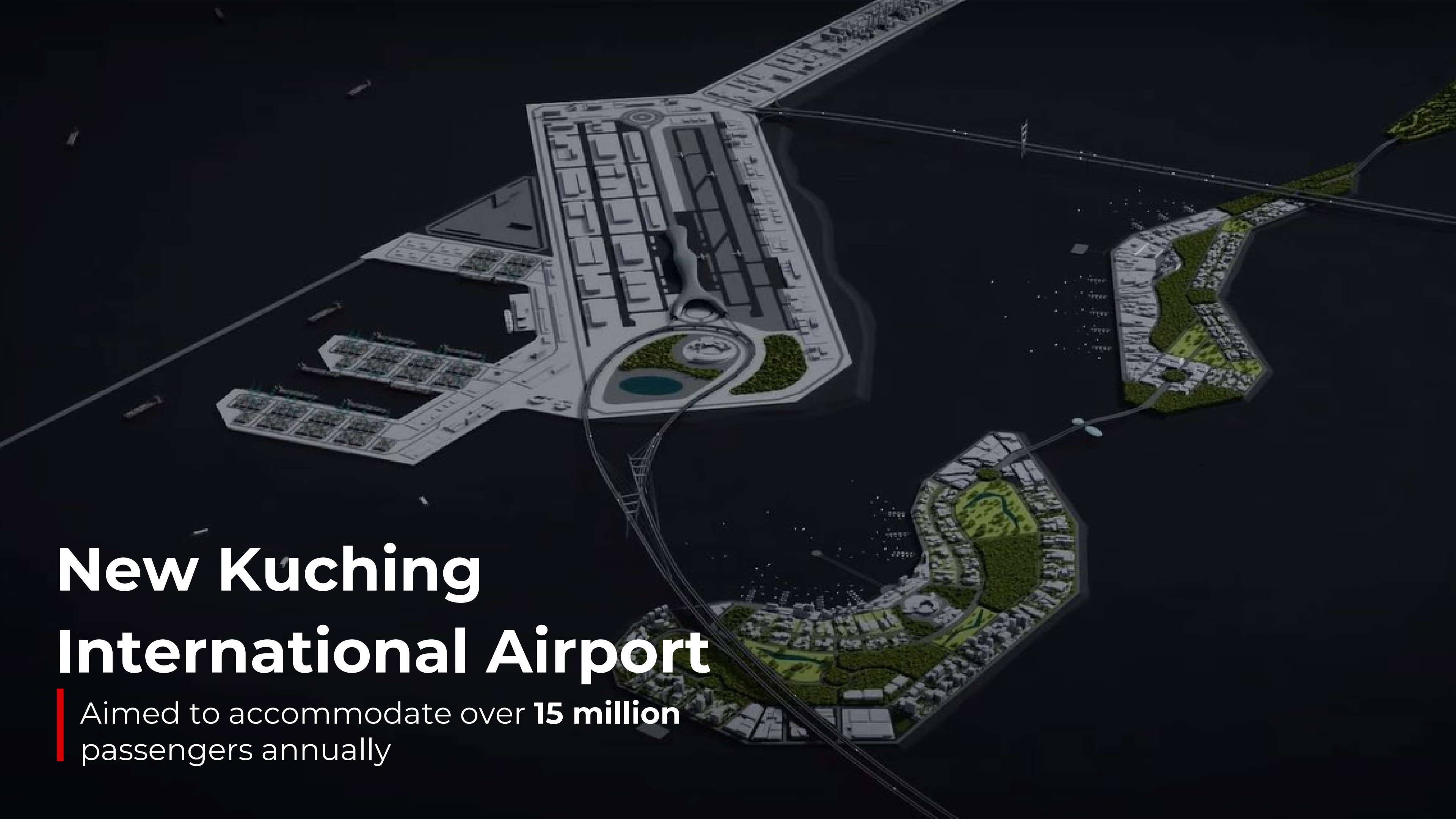
An aerial photograph of the Samalaju Industrial Park in Bintulu, Malaysia. The image shows a large industrial complex with numerous blue-roofed buildings and storage tanks, situated along a river or coastline. The surrounding area includes green forested land and some developed infrastructure like roads and bridges. The water body on the left has some small boats and structures. The overall scene depicts a major industrial hub in a tropical coastal region.

# Samalaju Industrial Park, Bintulu

Become the first location in Malaysia for the Transitioning Industrial Cluster (TIC) initiative by World Economic Forum.

# Semiconductors & Electronics

With (SMD) and recent investments, Sarawak aims to support Malaysia's E&E push and build local IC design capacity.



# New Kuching International Airport

Aimed to accommodate over **15 million**  
passengers annually

# Tanjung Embang Deep Sea Port, Kuching

Feasibility study for the Tanjung Embang Deep Sea Port is **currently in progress**

Close to planned infrastructure like:

- Kuching Low-Carbon Hub,
- Regasification terminals, and
- Future gas and hydrogen export facilities.



# Moving Forward

- Digital Economy
- Manufacturing
- Green Economy



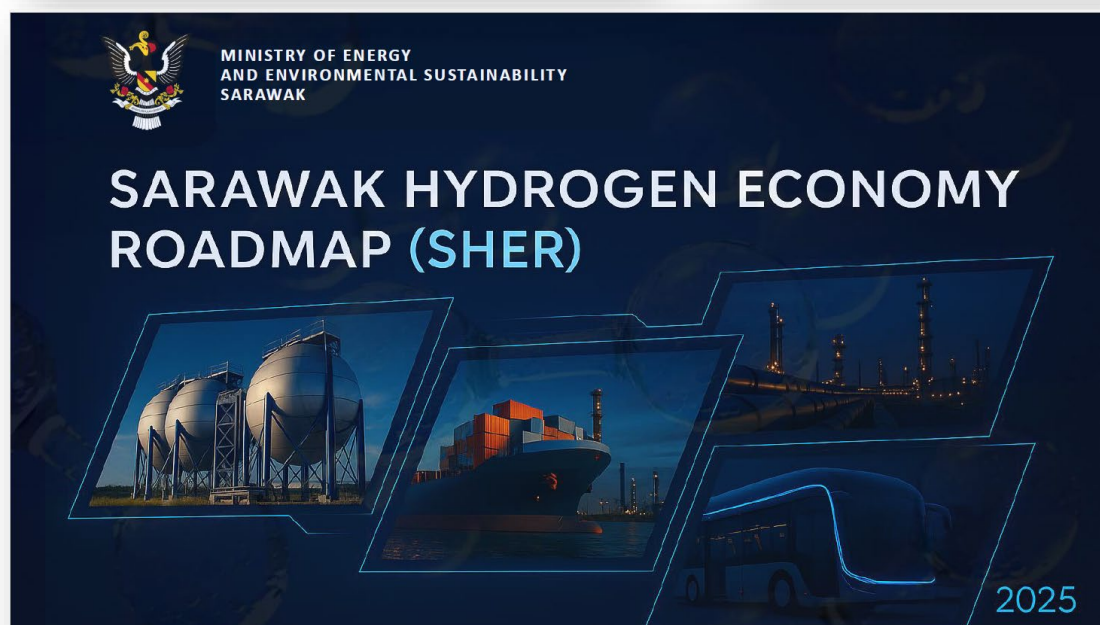
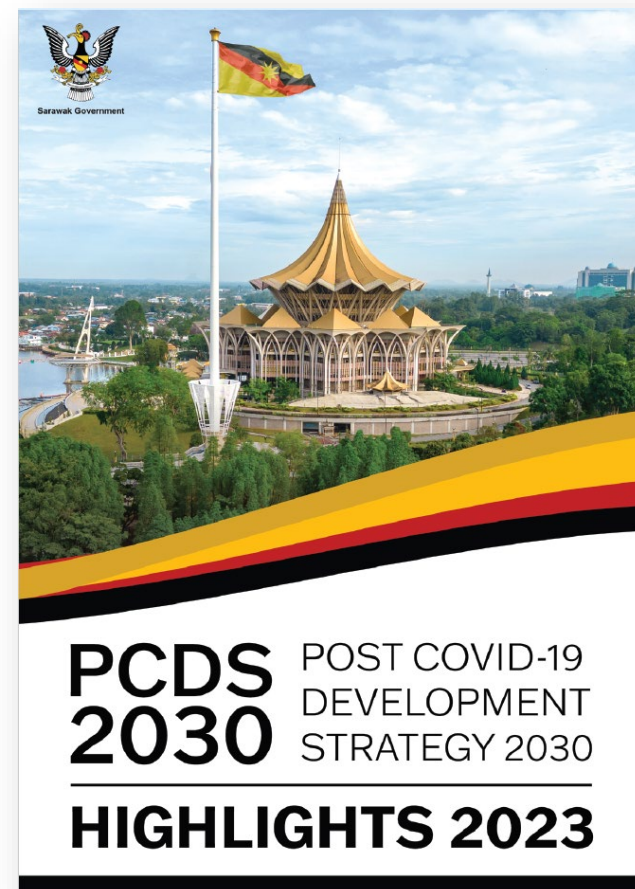
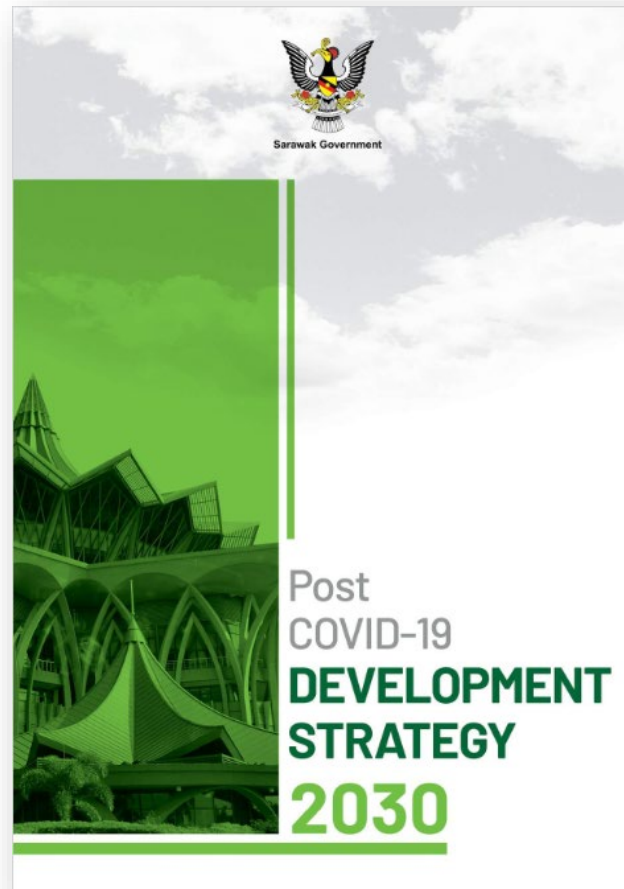
# Opportunities for Collaboration

---

- Technology & Knowledge Transfer
- Investment & Partnerships
- Research & Innovation
- Regional Gateway



# Thank You



## Scan to download key policies

